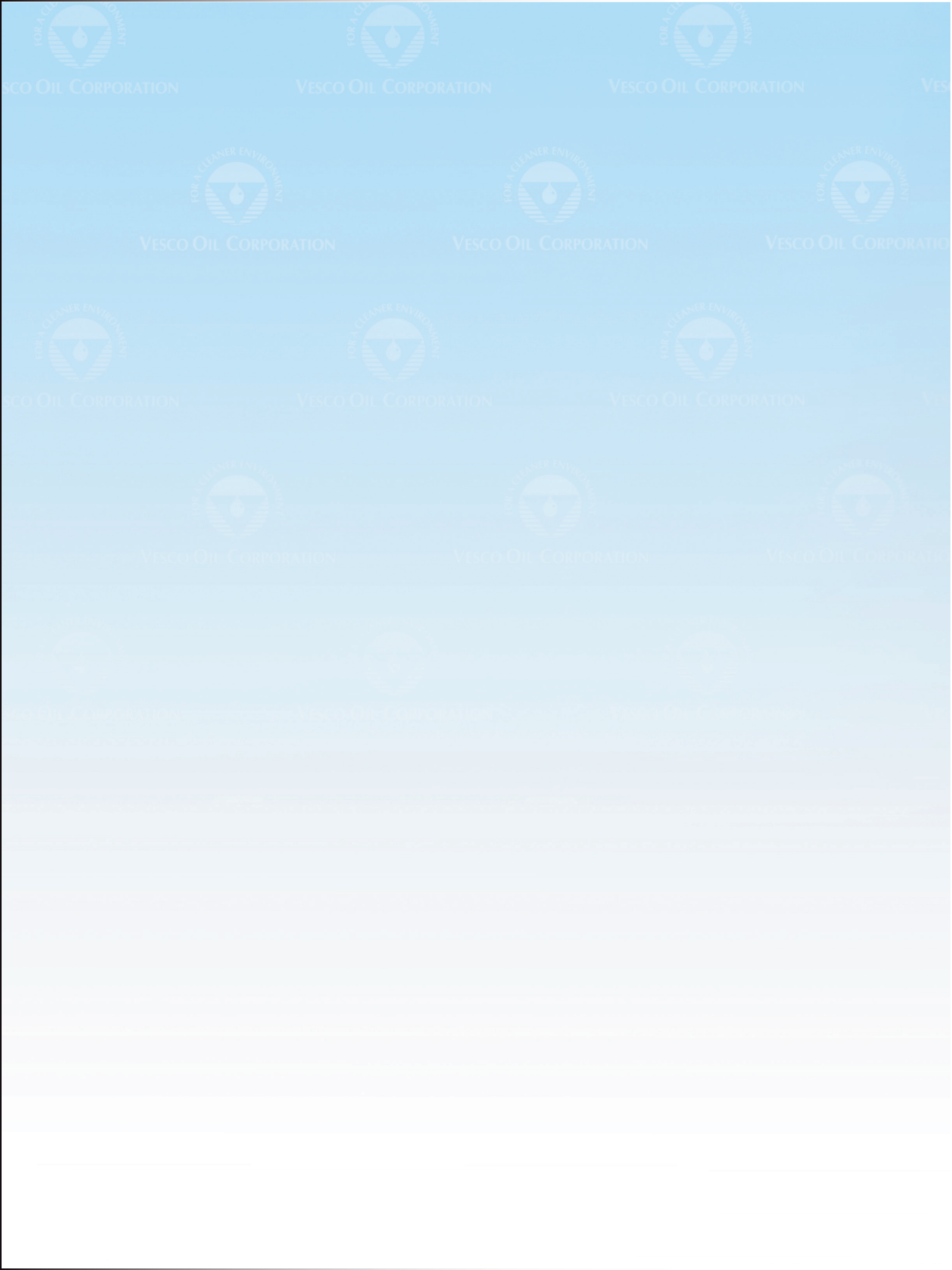




# VESCO OIL CORPORATION

## PRODUCT CATALOG





# TABLE OF CONTENTS

## **AUTOMOTIVE PRODUCTS**

ABSORBENTS

ANTI-FREEZE

FILTERS

JANITORIAL

SERVICE DEPARTMENT

VALVOLINE SERVICE CHEMICALS (VPS)

PYROIL

VESCO SERVICE PRODUCTS

WIPER BLADES

## **AUTO APPEARANCE PRODUCTS**

BUFFING PADS • BACKER PLATES • BONNETS • PAINT CORRECTION

BOTTLES

BRUSHES • SPIGOTS • FAUCETS

POWER WASHER • EXTRACTORS • WHEELS • SUPPLIES

FLOOR MATS • SEAT COVERS • WHEEL COVERS • DISPENSERS

GLOVES • SAFETY GLASSES • APRONS • RESPIRATORS

HANDLES • SNOW RAKES • SQUEEGEE • MAT CLAMP

PUMPS • SPRAYERS

SPONGES • WASH MITTS • CHAMOIS • STEEL WOOL

RAZOR BLADES • HOLDERS • WAX PADS

# TABLE OF CONTENTS

## AUTO APPEARANCE PRODUCTS

AEROSOL DETAIL

AIR FRESHENERS & ODOR ELIMINATORS

BODY SHOP

CARPET & VINYL DYES

CAR BRITE

CAR BRITE SELECT

CAR BRITE TUNNEL WASH

MEGUIARS

MENZERNA

MOTOR CITY

NUANCE SOLUTIONS

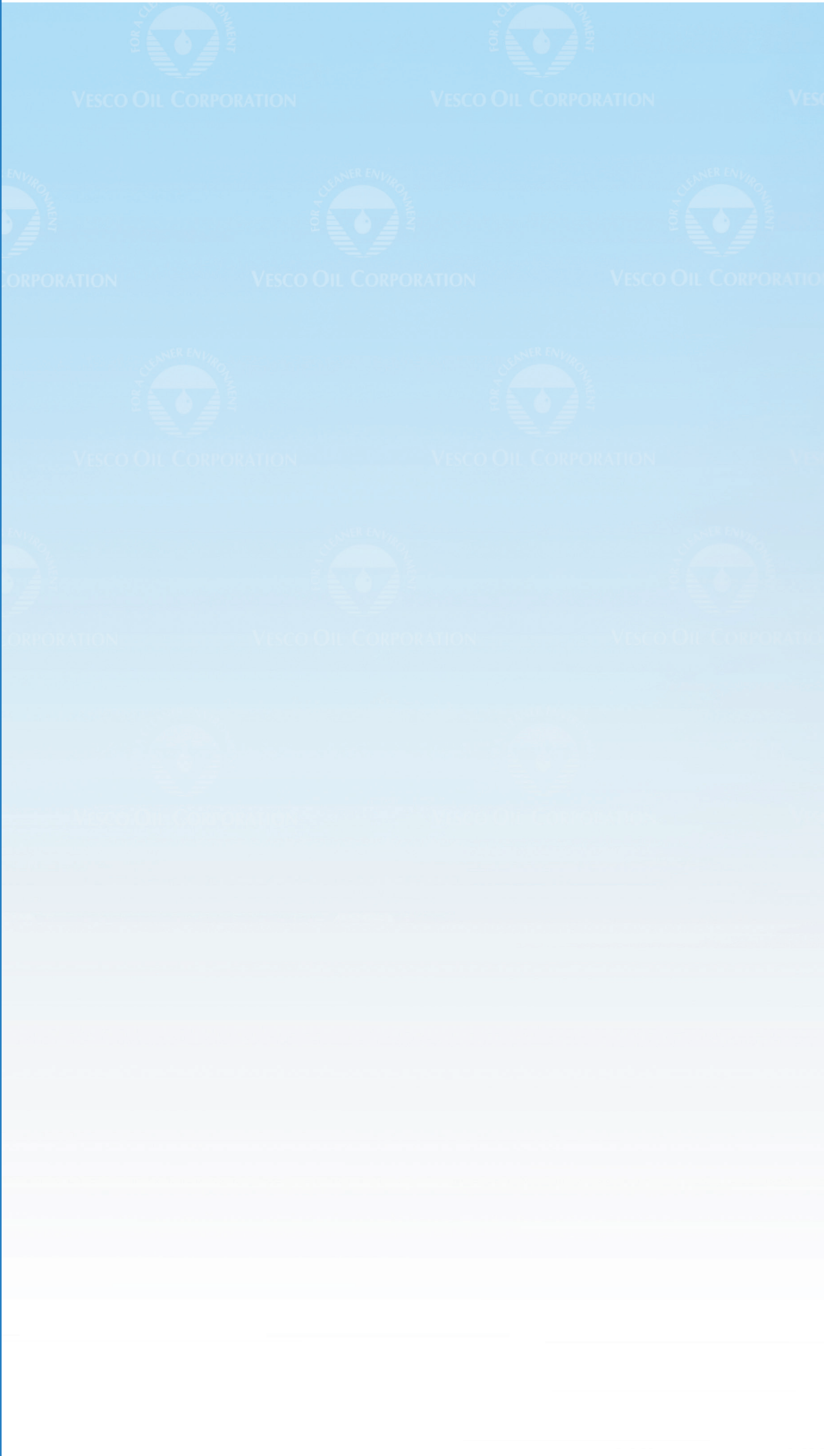
PAINTS & UNDERCOATINGS

WIZARD

3M



# AUTOMOTIVE PRODUCTS





# ABSORBENTS



## PLP005

Absorbent Pad

**15"x19" Oil Only • 200 Per Bale • Light Duty • White**

- This poly-lite pad is a 6 oz. pad that can be used on most petroleum spills.
- It's features are that it is hydrophobic to repel water, and floats on water to absorb petroleum spills.



## PLP100

Absorbent Pad

**15"x19" Oil Only • 100 Per Bale • Heavy Duty**

- This poly-lite pad is a 11 oz. pad that can be used on most petroleum spills.
- It also features that it is hydrophobic to repel water and floats on water to absorb petroleum spills.



## PLU200

Absorbent Pad

**15"x19" • 100 Per Bale Universal • Gray**

- This poly-lite pad is 11 oz. can be used on all types of spills.
- It's feature are it's lint free, and very high absorbency and recovered fluids can be reused, and can be incinerated.



## PLU222

Absorbent Pad

**15"x19" • Universal**

- 10 oz./ 22" in dimension that will fit most drums.
- It also can be used on all types of products such as anti-freeze and most petroleum products.



## PLU244

Absorbent Roll

**30"x150' Roll • Universal.**

- This poly-lite pad is a 11 oz., roll that is perforated every 17".
- It also can be used on all types of spills including hydraulic oils, coolants, and certain acids.
- It features are it's lint free, and tear off what your need.



## PLU342

Absorbent Socks

**3' x 48" Sock • Universal**

- This poly-lite sock is a 3"x48" sock that is made up of recycled cellulose filler that absorbs 28g per case or 90 oz. per sock.
- It can be used with all types of fluid's, including water base and petroleum-based products.



## 7941

Safe T Absorbent

**40lb Bag**

- Safe T Absorbent is a 100% earth product or known as clay.
- Great for all types of spills including oil, industrial chemicals, paint, and most liquids.



# ANTI-FREEZE



## VALVOLINE ZEREX DEX-COOL ANTI-FREEZE/COOLANT ZXEL1-C • ZXEL2-D

- ZEREX Dex-Cool Anti-Freeze/Coolant is approved for use in GM vehicles which require OAT Dex-Cool
- OAT Dex-Cool automaker approved for use in GM and Saab vehicles
- Meets or exceeds the following industry specifications: ASTM D3306, SAE J1034, J814, J1941, TMCOFATA, RP-302B and federal-specification A-A-870A
- 5 Year/150,000 Mile Guarantee
- Silicate and Phosphate Free Formula
- Orange in color



## VALVOLINE ZEREX G-05 ANTI-FREEZE/COOLANT ZXG051-C • ZXG052-D

- ZEREX G-05 Anti-Freeze/Coolant is the automakers approved that require the HOAT product
- Used in newer Ford & Daimler Chrysler automotive and diesel engines
- It's Hybrid Organic Acid Technology (HOAT) chemistry combines the ultimate protection against rust and corrosion
- 5 Year/150,000 Mile Protection
- Minimizes inhibitor depletion
- Low Silicate, Low PH, and phosphate-free formula
- Protects all cooling systems metals, including aluminum
- Yellow in Color



## VALVOLINE ZEREX ORIGINAL GREEN ANTI-FREEZE/COOLANT ZX001-C • ZX002-D

- ZEREX ORIGINAL GREEN provides superior cooling systems protection for passenger, light-duty, and heavy duty vehicles
- Automakers worldwide have used this formula for decades to protect for corrosion
- Patented low-silicate chemistry for heavy-duty applications with use of SCA
- Patented corrosion inhibitor package provides rust and corrosion protection
- Helps prevent boil-overs and freeze ups
- Use in vehicles that specify traditional green coolant



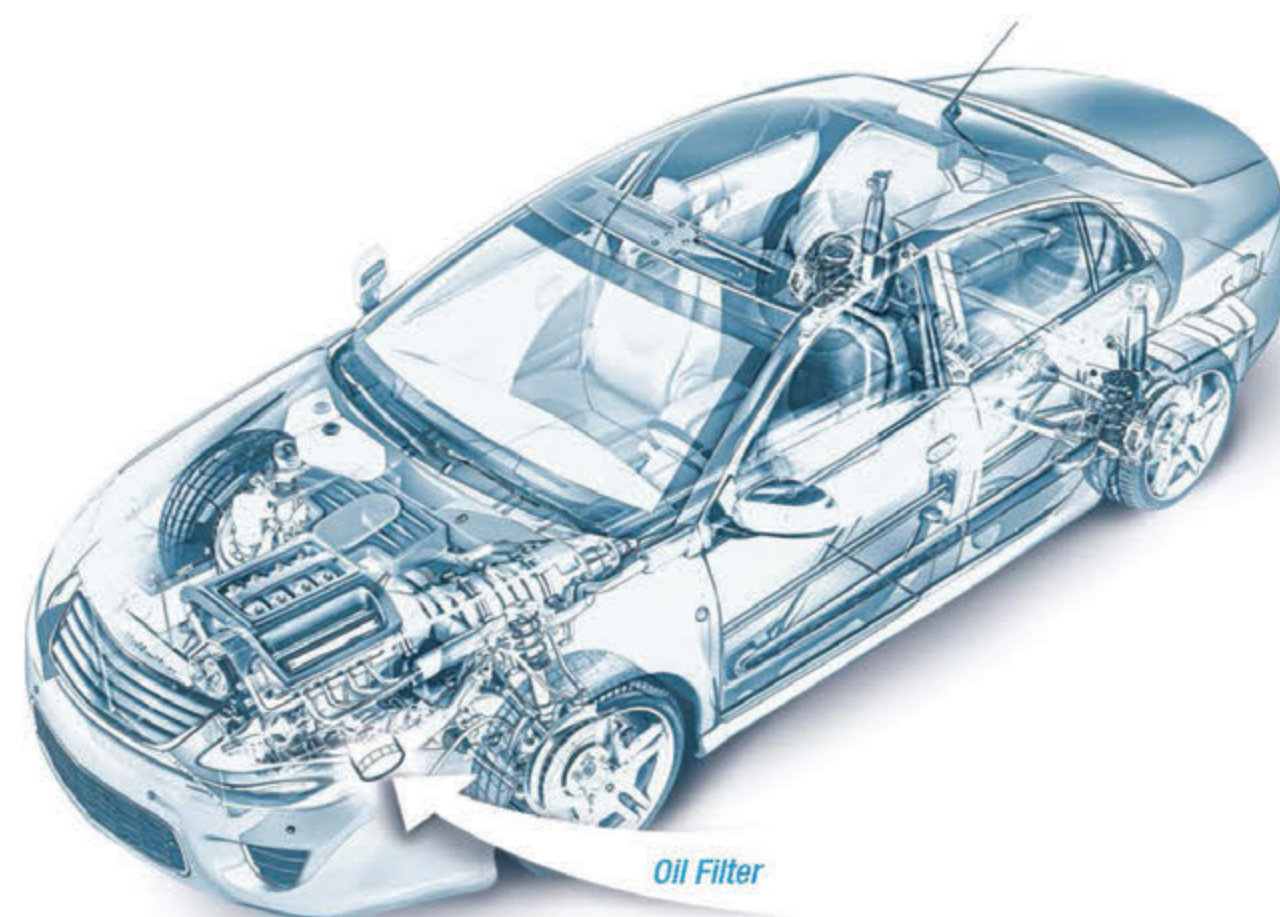
## VALVOLINE MAX LIFE ANTI-FREEZE/COOLANT 719009-C • 719008-D

- Approved for all makes and model's
- Mixes safely with all color anti-freezes
- Patented ALUGARD Plus
- Helps prevent boil-overs and freeze ups
- Helps protect all cooling system metals against rust and corrosion
- Patented corrosion inhibitor package to provide protection
- Meets ASTM D3306
- 5 Year/150,000 Mile Protection



# FILTERS

## Valvoline<sup>TM</sup> Oil Filter 101



### What makes a quality oil filter and why does it matter?

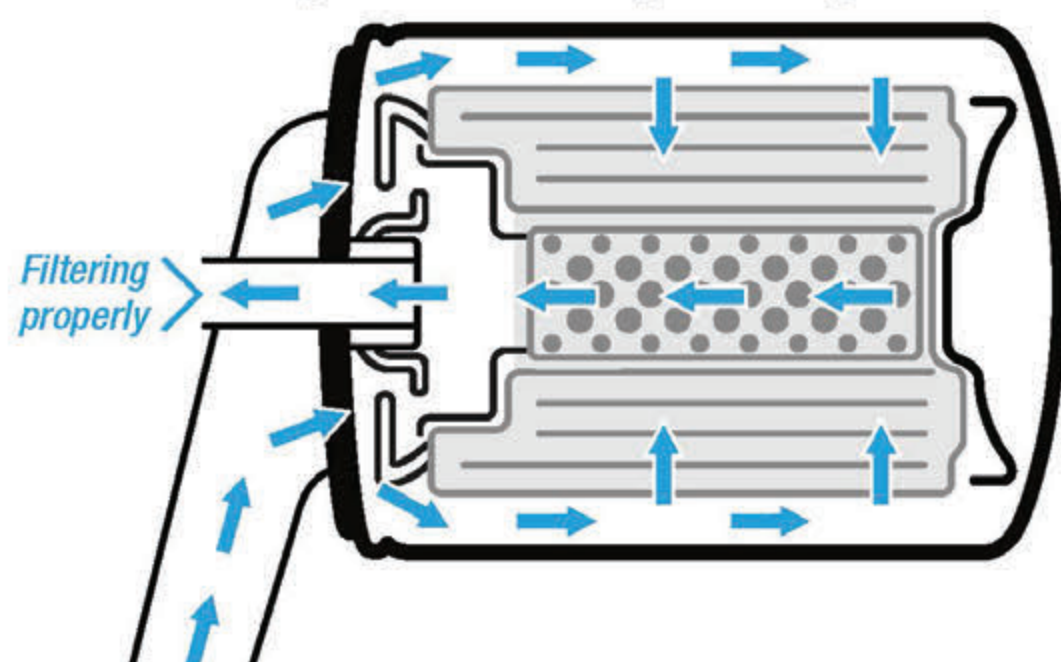
Motor oil is the lifeblood of the engine; the filter helps maintain the quality of the fluid

- The oil filter is designed to remove harmful particles and protect the engine from wear
- A quality oil filter is designed to balance high efficiency with long life capacity requirements

### What is efficiency and capacity?

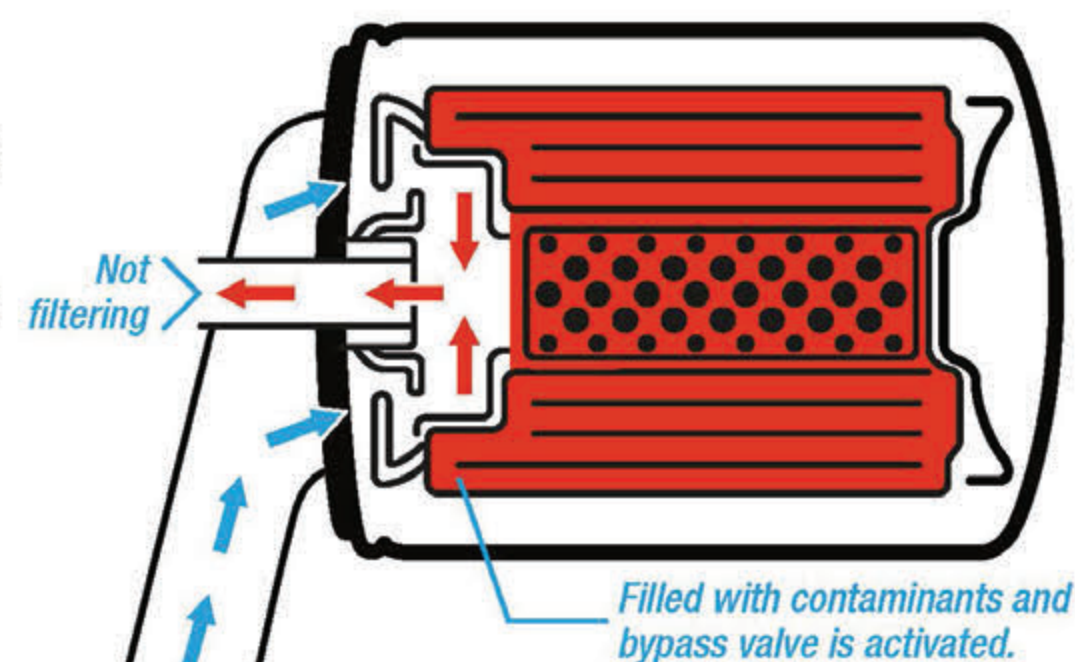
#### EFFICIENCY:

How good the filter is at trapping the contaminants.



#### CAPACITY:

Measures the amount of contaminants the filter can hold.

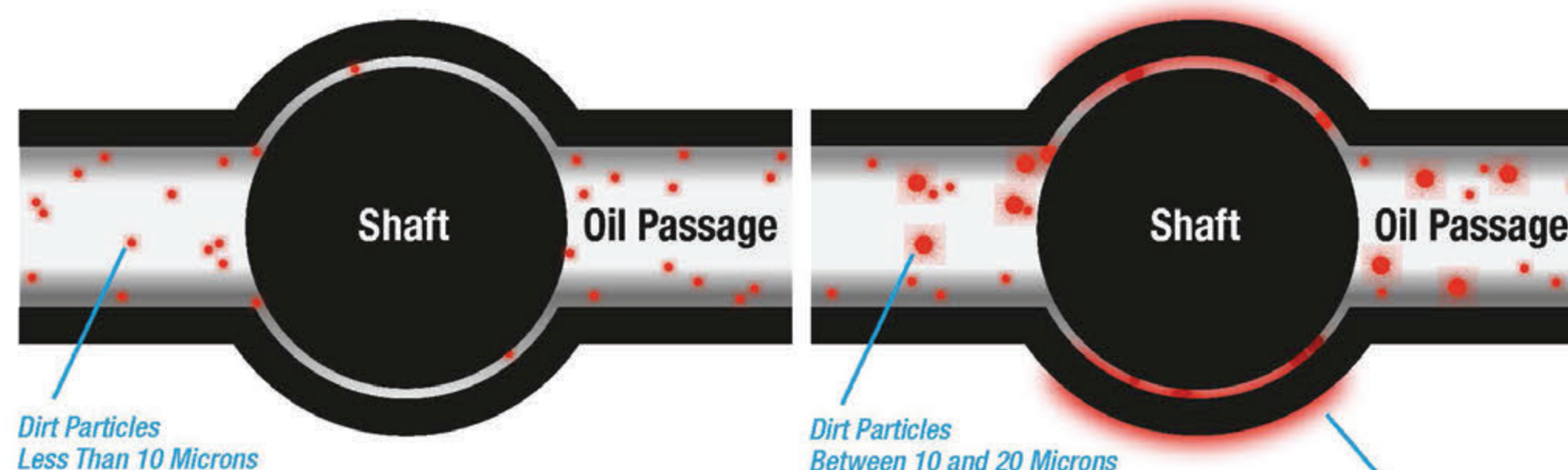


Capacity is important for determining the drain interval. The higher capacity, the longer the filter will work. Efficiency and capacity are equally important and are the inverse of each other. For example, a less efficient filter allows for greater capacity but it lowers the engine protection. Valvoline filters protect engines from the harmful particles that can cause engine damage by using high quality synthetic blended media with 94% efficiency at 20 microns.

Engine manufacturing tolerances have increased with new technologies and this makes filtration of the lubricant even more important to provide maximum performance.

### What are filters protecting?

Dirt particles in the 10-20 micron range may be tiny, but can do serious damage to bearings, cylinders, and other engine parts. Dirt particles are the #1 Enemy for gasoline engines!



Particles from 10 to 20 Microns become lodged between the shaft and the bearing housing generating heat and damaging surface areas.

### Why Valvoline Filters?

Valvoline has spent over 150 years under the hood, tinkering and perfecting lubricants to improve vehicle performance. This expertise goes into every product that proudly wears the Valvoline name.

*Valvoline filters meet OE recommended drain intervals regardless of make, model, or year of the vehicle. Valvoline guarantees workmanship on all of its filters.*



Valvoline's Service Parts APP  
Available At:





# FILTERS

## Debunking Oil Filter Myths

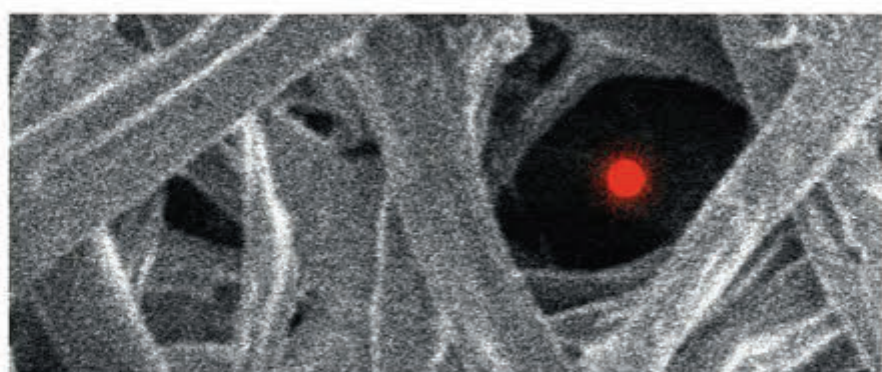
**1. MYTH:** Filter feels lightweight so the quality must not be as good.

**FACT:** Filter designs have evolved with ever-changing engine technology. Weight has no bearing on performance. Valvoline™ filters endure rigorous pressure testing, collapse strength testing, as well as meticulous lock seam verification. All of this ensures a high quality product. Remember, the most important quality measures of a filter are efficiency and capacity, not weight.

**2. MYTH:** Less filtration media inside means it does not work as well.

**FACT:** Media technology has vastly improved in recent years. Traditional cellulose (paper) media requires more material to perform and is not as efficient as newer, synthetic blended media. Valvoline uses advanced synthetic blended media to provide excellent protection, high efficiency and greater capacity.

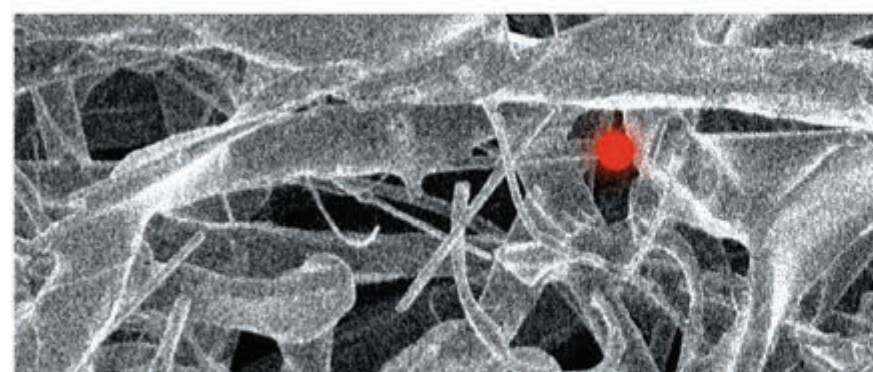
### All Filter Media is not created equal.



10 Microns

#### TRADITIONAL CELLULOSE:

- Lower quality oil filters
- Larger pores. Lower efficiency
- Less protection for the engine



#### VALVOLINE SYNTHETIC BLEND MEDIA:

- Microfibers improve efficiency without sacrificing capacity
- Polyester fibers provide superior durability
- Improved engine protection

**3. MYTH:** Plastic cores are cheap and not strong enough to do the job.

**FACT:** Valvoline filters are designed to meet the rigorous structural integrity testing required by the OE. Advancements in filter design allow for the use of both metal and nylon cores.



**4. MYTH:** Smaller filters do not work as well.

**FACT:** With advancements in filter design, improved media, structural integrity and engine design, overall filter size has required change.

**5. MYTH:** I can buy a filter for the same vehicle application for less price; Why?

**FACT:** The old adage is true, "You get what you pay for." Valvoline filters are designed to perform at a high level and are guaranteed to meet OE recommended oil drain intervals for the make and model. Protect your engine with a quality filter.

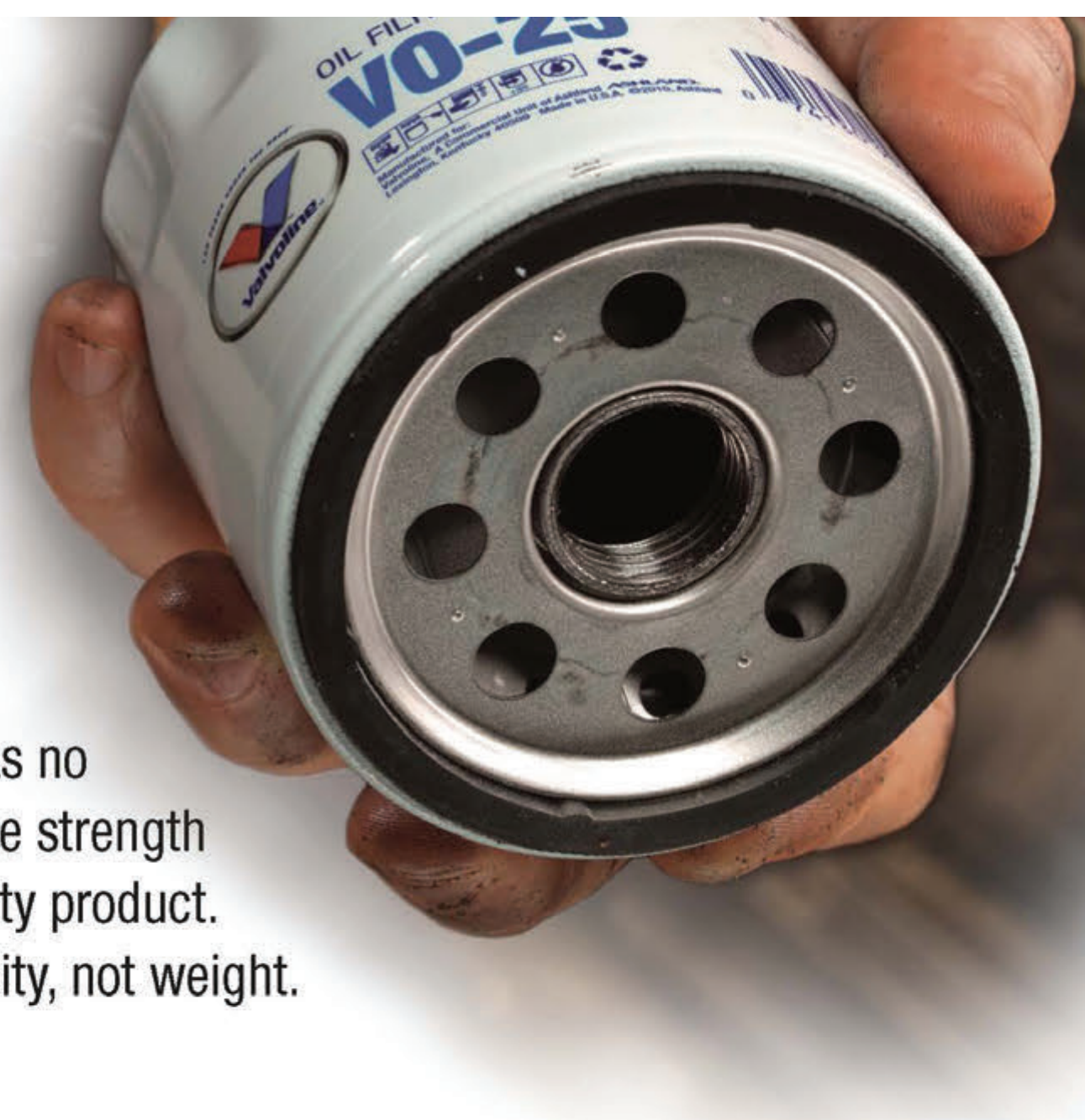
## Why Valvoline Filters?

Valvoline has spent over 150 years under the hood, tinkering and perfecting lubricants to improve vehicle performance. This expertise goes into every product that proudly wears the Valvoline name.

*Valvoline filters meet OE recommended drain intervals regardless of make, model, or year of the vehicle.  
Valvoline guarantees workmanship on all of its filters.*

**Valvoline Filters Toll-Free Technical Support  
within the U.S. 1-800-TEAM-VAL**

[www.valvolinefilters.com](http://www.valvolinefilters.com)





# JANITORIAL

## PAPER PRODUCTS & DISPENSERS



**TORK MEK-4-PLY BLUE 2/1**  
**132441**



**TORK DISPENSER-MAXI**  
**653028A**



**WYPALL 1/4 FOLD 12/90 CT.**  
**KIM05812-C**



**CENTER PULL-PLY 6/1**  
**101234**



**TORK DISPENSER - STANDARD**  
**659028A**



**ENMOTION TOWEL - 6/1**  
**89460-C**



**C-FOLD TOWEL - 6/1**  
**K1510-C**



**C-FOLD DISPENSER**  
**9905**



**JRT TISSUE - 12/1**  
**KC7006-C**



**ROLL TOWELS - 6/1**  
**KC1005-C**



**ROLL TOWEL DISPENSER**  
**KC9996**



**TOILET TISSUE 2-PLY**  
**KC446-C**





### **SUPER NATURAL- HAND CLEANER**

Vesco own private label hand cleaner a non-solvent formula eliminates drying and cracking. Contains superior skin emollients and skin conditioners, and natural walnut shell scrubbers. Contains a thick concentrated formula which reduces use up to 75%. Washes away completely with no greasy residue and no Phosphates.

V235883

120 oz



### **SUPER NATURAL - HAND & SURFACE TOWELS**

Vesco own private label hand & surface towel, the same formula found in our hand cleaner. These towel's can be used to clean most surfaces found in most areas that need to cleaned. Comes with a handy tub for easy dispensing.

V481104

70 Ct.



### **SUPER NATURAL HAND CLEANER DISPENSER**

This dispenser is to be used with our SUPER NATURAL - Hand Cleaner. This installs very easily and loads the same. Comes with a Lifetime Guarantee.

V499700



### **LOTION HAND CLEANER**

A DEA-free lotion hand cleaner that gently removes dirt and grease while Conditioning your skin. It contains no abrasives or solvents and features a floral scent.

E15-G

# VALVOLINE SERVICE CHEMICALS (VPS)

ENGINE SERVICE & CONDITIONERS

FUEL SYSTEM SERVICE PRODUCTS

DIESEL FUEL SYSTEM SERVICE PRODUCTS

RADIATOR & COOLING SYSTEM SERVICE PRODUCTS

POWER STEERING SYSTEM SERVICE PRODUCTS

TRANSMISSION SYSTEM SERVICE PRODUCTS

DRIVELINE SYSTEM SERVICE PRODUCTS

BRAKE SYSTEM SERVICE PRODUCTS

HVAC SYSTEM SERVICE PRODUCTS

BATTERY SERVICE PRODUCTS

USED CAR RESTORATION SERVICE PRODUCTS





### 571214-C VPS Valvoline Oil Additive

- Superior chemistry and protection over industry standard API SM quality oils alone.
- Provides excellent oxidation, wear, and deposit protection.
- Uses unique dual-detergent system to help maintain engine cleanliness.
- Helps to restore fuel economy, horsepower, and engine efficiency.
- 12/11oz bottles per case.



### 806221-C VPS Top Treat Oil System Cleaner

- 100% Solvent-Free chemistry.
- Cleans in just 10 minutes without any tools or equipment.
- Dissolves and removes sludge, deposits, and varnish.
- Helps to restore fuel economy, horsepower, and engine efficiency.
- Helps reduce harmful emissions and engine wear.
- Prolongs engine life.
- 24/16oz bottles per case.



### VP051-C VPS Complete Oil System Cleaner

- 100% Solvent-Free chemistry.
- Cleans in just 10 minutes without any tools or equipment.
- Dissolves and removes sludge, deposits, and varnish.
- Helps to restore fuel economy, horsepower, and engine efficiency.
- Helps reduce harmful emissions and engine wear.
- Prolongs engine life.
- 24/11oz bottles per case.



### VP076-C VPS Fuel Rail & Injector Cleaner Kit



- Cleans the entire fuel system.
- Helps to restore maximum power and performance.
- Instantly removes deposits from the entire fuel and air intake system including fuel injectors, intake valves, combustion chambers, and throttle body.
- Contains powerful synthetic cleaners.
- Safe for catalytic converters and oxygen sensors.
- 6/12oz cans per case.

### VP072-C VPS Throttle Body Spray Cleaner



- Quickly dissolves gum, varnish, sludge, grease, and carbon deposits.
- Effectively cleans throttle plates on fuel injected engines.
- Eliminates hesitation and rough idle.
- Restores maximum power.
- Recommended for routine preventative maintenance.
- Reduces emissions caused by deposits.
- Restores engine efficiency and fuel economy.
- 12/3oz cans per case.

### VP069-C VPS Air Intake Cleaner



- Dissolves gum and varnish deposits on throttle body and intake.
- Can help reduce exhaust emissions.
- 24/12oz bottles per case.





### VP201-C VPS Diesel Injector Treatment

- Add to the fuel tank to clean deposits.
- Dissolves and removes deposits, gums, and varnish.
- Uses a unique keep-clean technology to minimize future deposits.
- Contains special lubricity additives to properly lubricate diesel fuel pumps and injectors.
- Provides 3 numbers of cetane improver for increased engine efficiency.
- 12/12oz bottles per case.



### VP202-C VPS HD Diesel Injector Cleaner

- Provides all of the benefits of the VPS Diesel Injector Cleaner
- Dissolves and removes deposits, gums, and varnish.
- Use in conjunction with a Diesel Fuel Tool to administer product.
- Powerful detergents immediately remove deposits, carbon, varnish, and other performance robbing contaminants from injectors and combustion chambers restoring efficiency and fuel economy.
- 6/32oz bottles per case.



### VP205-C VPS Diesel Fuel Rail Kit

- Effectively cleans the entire fuel system in just 15 minutes.
- Safe for all Diesel Systems.
- Contains cetane improver and lubricity additive.
- Dissolves and removes deposits, gums, and varnish.
- Helps restore fuel economy and engine efficiency.
- Use once a year or every 7,500 to 9,000 miles.
- Kit contains: (VP201, VP203).
- 6/2 parts per case.



### VP206-C VPS HD Diesel Fuel Rail Kit

- Effectively cleans the entire fuel system in just 15 minutes.
- Safe for all Diesel Systems.
- Contains cetane improver and lubricity additive.
- Dissolves and removes deposits, gums, and varnish.
- Helps restore fuel economy and engine efficiency.
- Use once a year or every 30,000 miles.
- Kit contains: (VP202, VP204).
- 6/2 parts per case.





### 674121-C VPS Fuel Rail Cleaner

- Cleans carbon and varnish deposits from fuel injector tips.
- Corrects drivability problems due to deposit buildup on injectors.
- Cleans fuel injectors.
- Helps remove intake valve and combustion chamber deposits.
- 12/10oz bottles per case.



### 507457-C VPS EGR Cleaner

- Cleans carbon and varnish deposits from fuel injector tips.
- Corrects drivability problems due to deposit buildup on injectors.
- Dissolves gum and varnish deposits on throttle body and intake.
- Helps reduce exhaust emissions and cleans fuel injectors.
- Helps remove intake valve and combustion chamber deposits.
- 12/15oz bottles per case.



### VP086-C VPS Fuel Rail & Throttle Body Cleaner

- Cleans the entire fuel system.
- Helps to restore maximum power and performance.
- Contains powerful synthetic cleaners that help remove deposits on intake valves, clogged fuel injectors, and throttle body.
- Reduces knocks and pings.
- Safe for catalytic converters and oxygen sensors.
- 6/17oz cans per case.





### 666727-C VPS Mini Tune Fuel Kit

- Cleans entire fuel and air intake system at the same time.
- Removes deposits from fuel injectors, intake valves, combustion chambers, throttle body, and the intake manifold.
- Provides excellent oxidation, wear, and deposit protection.
- Helps to restore fuel economy, horsepower, and engine efficiency.
- Kit contains: (679710, 571214).
- 12/2 parts per case.



### VP071-C VPS 3 Part Fuel System Kit

- Restores maximum power and performance.
- Eliminates rough idle, hesitation, and knocking.
- Reduces emissions caused by deposits.
- Restores engine efficiency and fuel economy.
- Kit contains: (VP069, 679710, VP072).
- 6/3 parts per case.



### 675380-C VPS Plus Fuel Kit

- Restores power and fuel economy.
- Eliminates hesitation and rough idle.
- Cleans entire fuel and air intake system at the same time.
- Removes deposits from fuel injectors, intake valves, combustion chambers, throttle body, and the intake manifold.
- Kit contains: (674121, VP069, 679741).
- 6/3 parts per case.



# SERVICE PRODUCTS

## RADIATOR & COOLING SYSTEM SERVICE PRODUCTS



### VP05-C VPS Radiator Service Kit

- Removes rust, scale, and oily residue.
- Safe for all cooling system metals.
- Prevents rust and corrosion.
- Lubricates water pumps.
- Universal formulation and color.
- Kit contains: (VP01 ,VP004).
- 6/2 parts per case.



### VP003-C VPS Radiator Sealer

- Seals cooling system leaks.
- Helps prevent future leaks.
- Non-clogging liquid formula.
- Compatible with all antifreeze coolants.
- Safe for use on all cooling system metals.
- 12/14oz bottles per case.





### 860342-C VPS Power Steering Service Kit

- Synthetic-Based Fluid is suitable for use in all makes and models .
- Optimizes power steering performance, even in cold weather.
- 100% Solvent-Free formula for safe and effective cleaning.
- Helps to prevent leaks, stiff steering, and pump noise.
- Kit contains:(VP095, VP056).
- 6/2 packs per case.



### 859119-C VPS Power Steering System Kit for Honda/Acura

- Specialized fluid for Honda and Acura vehicles with enhanced viscosity, and anti-wear properties for extended durability.
- Optimizes power steering performance, even in severe cold weather.
- 100% Solvent-Free for safe and effective cleaning.
- 6/3 packs per case.



### 860343-C VPS Full Synthetic Power Steering Fluid

- New Full-Synthetic formula to improve protection in wear, copper, corrosion, foam, and oxidation.
- Helps extend the life of the power steering system.
- Optimizes steering performance even in severe cold weather.
- 100% Solvent-Free for safe and effective cleaning.
- 6/32oz bottles per case.



### 859070-C VPS Full Synthetic Power Steering Fluid for Honda/Acura

- Synthetic-based fluid is designed to improve steering performance.
- Helps prevent leaks and squeals while protecting against corrosion, wear, and mechanical breakdown.
- Provides optimal steering performance even in extreme temperatures.
- Eliminates power steering pump noise.
- Extends the life of the power steering system.
- 6/32oz bottles per case.





### VP094-C VPS Transmission Cleaner & Conditioner Kit

- 100% Solvent-Free cleaning formula.
- Safely and thoroughly cleans, protects, and conditions a vehicle's transmission.
- Cleaners work to improve heat transfer within the transmission cooler, reduce varnish, and renew valve operation.
- Environmentally friendly.
- Kit contains: (VP093, 637554).
- 6/2 parts per case.



### VP093-C VPS Automatic Transmission Conditioner and Sealer

- 100% Solvent-Free cleaning formula.
- Protects against shudder and premature wear.
- Conditions seals to help prevent leaks.
- Compatible with all types of transmission fluids.
- Maintains optimum shifting characteristics.
- Additional protection against wear and high temperature breakdown to prolong the life of the transmission.
- 12/12oz cans per case.



### 508216-C VPS Manual Transmission & Transfer Case Fluid

- Full synthetic formula.
- Synchronesh compatible.
- Suitable for use in GM, Chrysler, and all Asian OEM manual transmissions.
- Helps restore fuel economy, horsepower, and driveline efficiency.
- 12/32oz bottles per case.





### 819195-C VPS 75W90 Gear Oil

- Full synthetic formula enriched with a limited slip additive.
- Designed for both conventional and limited slip differentials.
- Outstanding protection from severe temperatures and loads.
- Exceeds API GL-5, Military spec. SAE J2360 and MT-1 Spec.
- Recommended for passenger cars, light trucks, sport utility, heavy load, luxury, and high performance vehicles.
- 12/32oz bottles per case.



### 819196-C VPS 75W140 Gear Oil

- Full synthetic formula enriched with a limited slip additive.
- Designed for both conventional and limited slip differentials.
- Outstanding protection from severe temperatures and loads.
- Exceeds API GL-5, Military spec. SAE J2360 and MT-1 Spec.
- Recommended for passenger cars, light trucks, sport utility, heavy load, luxury, and high performance vehicles.
- 12/32oz bottles per case.



### VP011-C VPS Limited Slip Additive

- Offers enhanced protection and performance from noise and chatter in limited slip differentials under severe conditions such as heavy towing or high performance driving.
- 12/4oz tubes per case.





### 608334-C VPS Brake Fluid Dot 3 and Dot 4

- Maximizes ABS performance.
- Exceeds Dot 3 and 4 specifications.
- Compatible with conventional brake fluids.
- Provides superior corrosion and anti-vapor lock protection.
- Provides necessary brake pedal response through its incompressible hydraulic properties.
- 6/48oz bottles per case.



### VP101-C VPS Brake Stop Squeal

- Eliminates brake squeal at the surface between brake pads and rotors or brake shoes and drum.
- Effective on all makes and models.
- Does not damage or harm brakes.
- Anti-squeal lifetime protection.
- 24/1oz bottles per case.



### VV819 VPS Brake Test Strips

- Easy to read bright colors.
- Measures virtual age of brake fluid.
- Accurate and repeatable.
- Test is based on preventive maintenance instead of safety.
- Provides a precursor warning to active corrosion.
- 100 strips per bottle.





### 507460-C VPS All Season Heater and AC Odor Eliminator

- Reduces allergens and odors within vehicles.
- Cleans unseen micro-organisms such as mold, fungi, and bacteria.
- Complete HVAC system cleaner.
- No drilling or disassembly required.
- Kit includes: (507671, VP105).
- 12/2 parts per case.



### 507671-C VPS AC Foam Evaporator Cleaner

- Reduces allergens and odors within vehicles.
- Cleans unseen micro-organisms such as mold, fungi, and bacteria.
- No drilling or disassembly required.
- Ideal for quick lube operators.
- Service can be performed while oil changes are being done.
- 12/11oz cans per case.



### VP105-C VPS AC Intake Spray Odor Eliminator

- Service is performed by spraying contents through intake vents / air cowl while A/C system is turned on normal and fan is on high.
- Reduces allergens and odors within vehicles.
- Cleans unseen micro-organisms such as mold, fungi, and bacteria.
- Ideal for quick lube operators.
- 12/5oz cans per case.





### 591833-C VPS Anti-Corrosion Battery Kit

- Lifetime anti-corrosion guarantee.
- Helps extend battery life.
- Average good-quality battery lasts 37 months.
- Battery life is decreased by 1/3 in hot climates vs. cold climates.
- SAE study states under-hood temps have risen 30% since 1985.
- 12/1 parts kits per case.



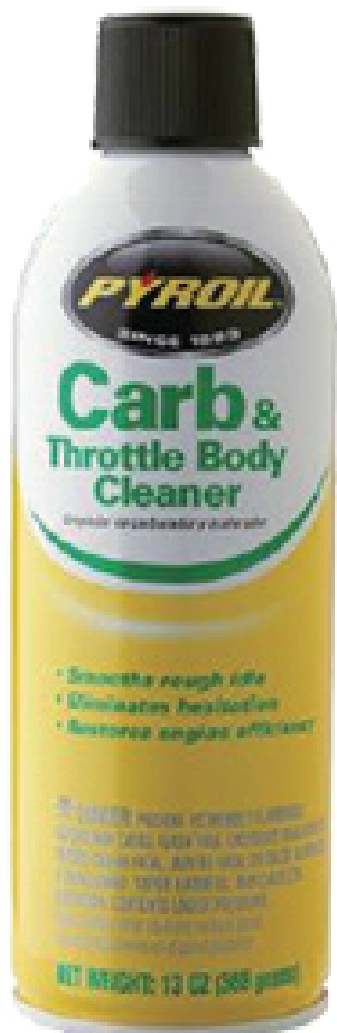


### VP089-C VPS Used Car Restoration Product

- Quick and easy way to restore performance.
- Service consists of products designed to revitalize vital components.
- No equipment or training necessary.
- Each kit contains an oil additive, transmission additive, water pump lubricant, and a fuel injector cleaner.
- Kit contains: (VP093, VP003, 679719, 571214).
- 4 kits per case.



# PYROIL



## **PYROIL CARB & THROTTLE BODY CLEANER - 13OZ C16-C**

- Helps remove gum, varnish, sludge, and carbon deposits instantly
- Cleans carburetors, chokes, PVC valves and throttle plates
- Safe for oxygen sensors, catalytic converters
- Removes throttle body deposits that interfere with air flow to PFI-TBI and diesel engines
- Contains no chlorinated solvents
- Low VOC formula



## **PYROIL WHITE LITHIUM GREASE - 10 OZ WLG11-C**

- Multi-Purpose lubricant spray for auto, home, farm, marine and shop
- For All Metal to Metal Applications
- Helps prevent rust and corrosion
- Heavy duty lubricant with penetrating action-stops squeaks and sticking
- Provides superior lubrication and durability in any weather or temperature



## **PYROIL STARTING FLUID - 11 OZ SFR11-C**

- Starts engines quickly and reduces drain on batteries
- Starts diesel or gasoline engines
- Contains an upper cylinder lubricant
- Fits diesel injector systems
- Gives smooth starts in all kinds of weather
- Ether and petroleum blend produces a lower freezing point
- Besides car's and trucks - works great on lawn mowers, trimmers, chain saw's, motorcycles, etc



## **PYROIL NON CHLORINATED BRAKES PARTS CLEANER - 13 OZ NCBPC-C**

- Strongest Pyroil Non-Chlorinated Brake Parts Cleaner available
- Removes gum, varnish, sludge, and carbon deposits instantly
- Helps remove brake fluid, oil, and brake dust instantly
- Use directly on pads, linings, and other friction parts
- Cleans carburetors, chokes, PCV valves, and throttle linkages
- Excellent drying time - dries leaving no residue
- Contains No Chlorinated Solvents



# PYROIL



## PYROIL DOT 3 BRAKE FLUID

**BF1-C (GAL)    BF12-C ( 12 OZ)    BF32-C ( 32 OZ )**

- Blend of premium grade glycols and glycol ethers with inhibitors for corrosion protection
- Meets Federal Motor Vehicle Safety Standards
- Provides superior braking power
- Low moisture content
- Mixes with conventional Dot 3 brake fluid



## PYROIL DOT 4 BRAKE FLUID

**BF412-C**

- Blend of premium grade glycols and glycol ethers with inhibitors for corrosion protection
- Provides superior performance even under severe conditions
- High boiling point protection
- Low moisture content
- Mixes with conventional Dot 4 brake fluid



## PYROIL SILICONE LUBRICANT - 10 OZ

**SLS10-C**

- Lubricates, waterproofs and protects
- Stop's squeaks and sticking
- Non staining
- Prevents freezing of trunk lids, doors, and locks
- Leaves no sticky residue
- Can be used on door hinges, rubber mountings, drawers, windows, sliding doors, garden tools, fishing gear, firearms, and leather boots



## PYROIL POWER STEERING FLUID - 32 OZ

**PSF32-C**

- Meets OEM specifications
- Keeps seals and O rings pliable
- Helps maintain efficiency and performance
- Reduces squealing under severe conditions
- Prevents corrosion-oxidation and wear
- Will not clog or foam
- For year round use



# SERVICE DEPARTMENT



## **GRACO FIREBALL 300 5:1 AIR OPERATED PISTON PUMP 203-876**

- \* Perfect for high pressure grease and fluid oil transfer
- \* This pump has been the “Crown Jewel” of Graco since the 1950’s
- \* The pump of choice in most demanding environments



## **GRACO OIL KING- OIL DRAIN 238-866**

- \* 25 gal tank for high volume use
- \* Oversized wheels to move smoothly across uneven surfaces
- \* Funnel collects fluids from both drain plugs and filler port
- \* Removable filter screen prevents debris from entering the tank
- \* Polyethylene tank with filter tray, tool holders and sight gauge



## **GRACO OIL ACE-PRESSURIZED OIL DRAIN 119-577**

- \* Easy to remove and clean grate
- \* Easy height adjustment and simple locking screw
- \* Wider and thicker handle for superior maneuverability and comfort
- \* Larger casters for moving around on uneven floors
- \* Convenient hook for drain tube storage



## **GRACO 1/2" X50' OIL HOSE REEL HPM-65B**

- \* Designed for daily use at car dealerships, fleet services, and maintenance facilities
- \* Frame made from high strength steel-this reel will not bend or flex
- \* Steel spool for high demanding applications
- \* Open swivel ports-to ensure high fluid flow with minimal pressure loss



# SERVICE DEPARTMENT



## **GRACO 1/2" X 65' HOSE REEL HPL-56B**

- Use for Air, Water, Anti-Freeze, Windshield Washer Fluid
- Designed for daily use at car dealerships, fleet services, and maintenance facilities
- Frame made from high strength steel-this reel will not bend or flex
- Steel spool for high demanding applications
- Open swivel ports-to ensure high fluid flow with minimal pressure loss



## **GRACO SDM5 ELECTRONIC FLUID METER 255-348**

- Fluid inlet meets standard and high flow requirements
- Large LCD display and simple operator controls
- Adjusts for easy reading in all lighting conditions
- Calibrations easily adjusts from keypad
- Solid construction/durable cast trigger guard
- Flush mount nozzle valve-prevents leaks
- Designed for no leak performance



## **GRACO PM5 ELECTRONIC PRESET METER 255-200**

- Automatic shut- off for hands free operation
- Dispenses in gal's, quarts, pints, and liters
- Rugged trigger guard-protects the meter
- Easy-to-replace 9-volt alkaline battery
- Resettable total-for periodic reporting
- In-field calibration capability



## **GRACO PORTABLE CHASSIS #120 KEG PACKAGE 225-006**

Includes:

- Graco 50:1 Fireball Pump
- Drum Cover
- Follow Plate
- Holster
- Base w/ Casters
- 12' Fluid Hose
- Grease Gun



# VESCO SERVICE PRODUCTS



## VESCO - MULTI-PURPOSE SOLVENT V1011      V1011-P      V1011-D

- One of Vesco's top selling products available in cans, 5 gal pails and drums
- Will not harm the used oil stream
- Does not contain chlorinated solvent
- Dissolves grease and oil on contact
- Has a anti-static formulation
- CFC Free
- Will not harm cured paint
- Removes over-spray
- Dissolves undercoat and tar
- Cleans all brake parts
- For Industrial/Professional use only
- Made from virgin solvents
- Will not leave a oily film
- Can be used in Body Shops, Service and Parts Departments
- Safe on most fabrics
- Note: Extremely flammable



## VESCO - RELEASE PENETRATING OIL V7021

- Releases rusted and corroded parts
- Penetrates and attacks rust
- Heavy Duty lubricant
- Non-Flammable
- Controls metal oxidation
- Also controls aluminum corrosion
- Use on heat risers, door locks, frozen joints, rubber squeaks
- Also on most automotive, marine, farm, industrial and sporting equipment



## VESCO - MASTER BLASTER PENETRATING OIL V7022

- Releases most corroded and rusted parts
- Penetrates and attacks extra rusted parts
- Extra heavy duty lubricant
- Non Flammable
- Controls metal oxidation
- Also controls aluminum
- Use on heat risers, door locks, frozen joints, rubber squeaks
- Also on most automotive, marine, farm, industrial and sporting equipment



# WIPER BLADES

## VALVOLINE™ WIPER BLADES Surge Blade™

### TOP QUALITY TRADITIONAL BLADE PERFORMANCE

#### Traditional blade technology in a long-lasting durable blade

- Reliable streak & squeak-free wipe
- High-quality materials to provide maximum driving visibility
- All-steel frame with black anti-rust finish provides strength and durability
- Easy to install
- Meets or exceeds OEM standards
- Available in sizes from 12" – 28"





# WIPER BLADES

## Key Benefits of Valvoline™ Surge Blade™ Wipers:

***Great performance at an economical price***

### **Symmetrical all steel frame:**

- Ensures clear performance up to wind speeds of 65 mph
- The heavy gauge steel construction with anti-rust finish provides strength and durability for longer life

### **High density molded rubber blade provides:**

- Durability, long life, superior wiping edge
- Rubber blade is reinforced with a stainless steel spine for stability and consistent streak-free finish over the entire wiping surface.

### **Universal connection system:**

- Pre-installed adapter fits on 99% of all domestic vehicles

Description	Old Part No.	New Part No.	Unit UPC	Case UPC
Valvoline Surge Blade 12"	781095	836587	0 74130 58260 6	0 74130 58261 3
Valvoline Surge Blade 13"	781096	836424	0 74130 58262 0	0 74130 01140 3
Valvoline Surge Blade 14"	781097	836425	0 74130 58264 4	0 74130 58265 1
Valvoline Surge Blade 15"	781098	836426	0 74130 58266 8	0 74130 58267 5
Valvoline Surge Blade 16"	781099	836427	0 74130 58268 2	0 74130 58269 9
Valvoline Surge Blade 17"	781100	836428	0 74130 58270 5	0 74130 58296 5
Valvoline Surge Blade 18"	781181	836429	0 74130 58297 2	0 74130 58298 9
Valvoline Surge Blade 19"	781182	836430	0 74130 58299 6	0 74130 58300 9
Valvoline Surge Blade 20"	781183	836451	0 74130 58301 6	0 74130 58302 3
Valvoline Surge Blade 21"	781184	836452	0 74130 58303 0	0 74130 58304 7
Valvoline Surge Blade 22"	781185	836453	0 74130 58305 4	0 74130 58306 1
Valvoline Surge Blade 24"	781186	836454	0 74130 58307 8	0 74130 58308 5
Valvoline Surge Blade 26"	781003	836455	0 74130 58271 2	0 74130 58272 9
Valvoline Surge Blade 28"	781004	836456	0 74130 58273 6	0 74130 58274 3
Valvoline Wiper Standing Display Rack	593202	836581	0 74130 58295 8	





# WIPER BLADES

## VALVOLINE™ WIPER BLADES AquaBlade™

**PREMIUM, INNOVATIVE BEAM  
BLADE TECHNOLOGY DELIVERS  
SMOOTH, CONSISTENT  
PERFORMANCE**

**The ultimate for all  
season performance**

- Aerodynamic design provides clear performance in any driving condition
- Streak-free visibility
- Easy installation
- Wind and weather resistant frame will not clog in ice or snow
- Meets or exceeds OEM standards
- Available in sizes from 16" – 28"





# WIPER BLADES

## Key Benefits of Valvoline™ AquaBlade™ Wipers

### Aerodynamic Design:

- Beam wiper blades without metal or plastic brackets, joints or hinges, offering sleek design and superior performance over traditional wiper blades
- Ultimate in clear visibility in the worst driving conditions
- High-speed performance contoured design evenly applies pressure along the entire blade length for a clear wipe every time
- Smooth, quiet operation
- Friction reducing, graphite treated rubber provides a smoother, chatter free wipe
- Built-in aerodynamic spoiler significantly reduces drag, noise and wind lift
- Quick and easy installation

### Top Quality Rubber Blade:

- The best wiping edge for all weather conditions
- Graphite coating provides smooth, chatter free operation and extends the life of the wiper blade
- 100% natural rubber blade is reinforced for stability and consistent streak-free finish over the entire wiping surface

### Universal Connection System and Updated Packaging:

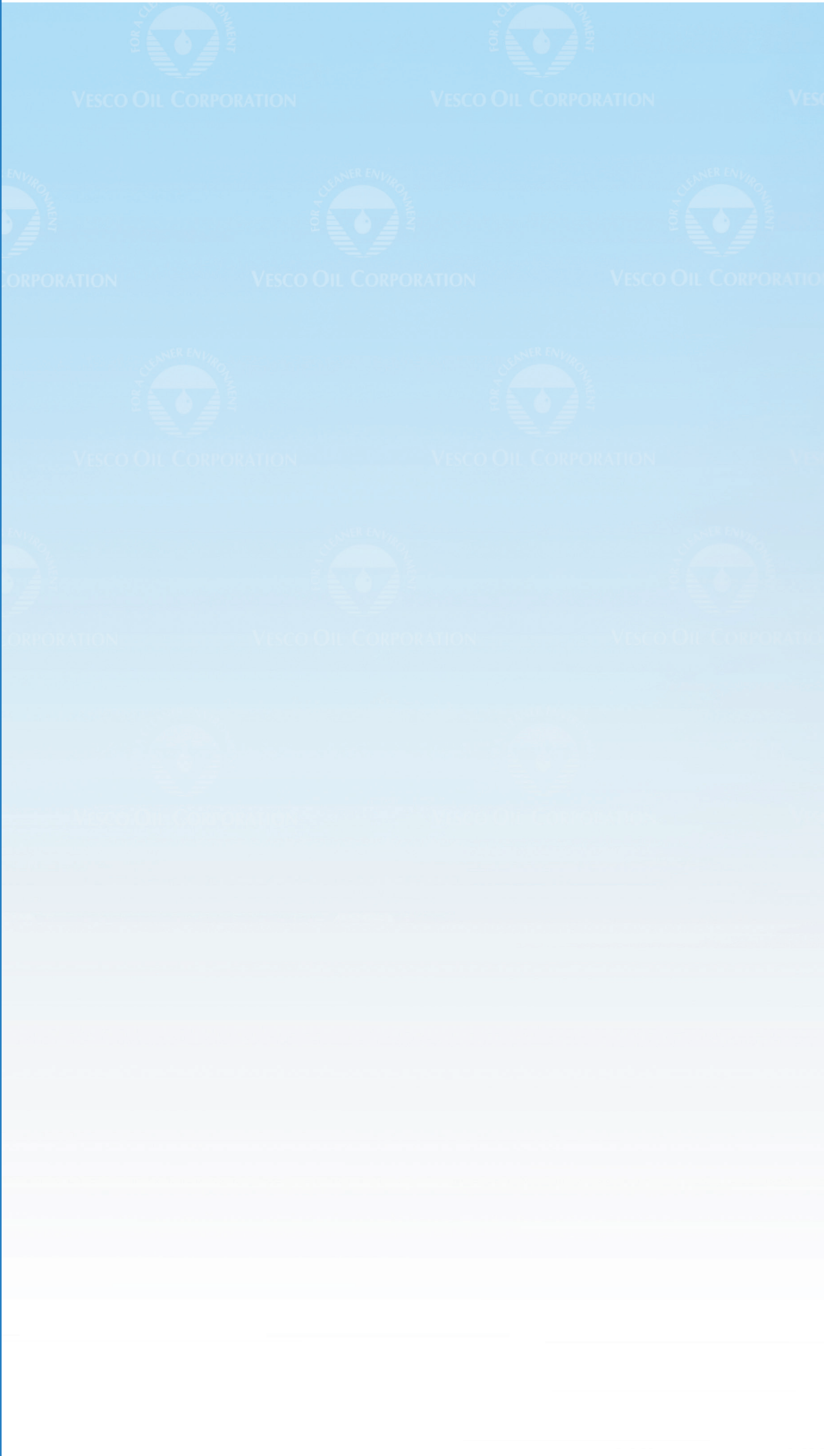
- Easy to install adapters fit on 97.5% of ALL vehicles in North America.  
Including new OEM applications
- Easy to open and reclose packaging

Description	Old Part No.	New Part No.	Unit UPC	Case UPC
Valvoline AquaBlade 16"	781114	836457	0 74130 58275 0	0 74130 58276 7
Valvoline AquaBlade 17"	781115	836532	0 74130 58277 4	0 74130 58278 1
Valvoline AquaBlade 18"	781116	836533	0 74130 58279 8	0 74130 58280 4
Valvoline AquaBlade 19"	781117	836534	0 74130 58281 1	0 74130 58282 8
Valvoline AquaBlade 20"	781119	836535	0 74130 58283 5	0 74130 58284 2
Valvoline AquaBlade 21"	781120	836536	0 74130 58285 9	0 74130 58286 6
Valvoline AquaBlade 22"	781121	836537	0 74130 58287 3	0 74130 58288 0
Valvoline AquaBlade 24"	781122	836538	0 74130 58289 7	0 74130 58290 3
Valvoline AquaBlade 26"	781123	836539	0 74130 58291 0	0 74130 58292 7
Valvoline AquaBlade 28"	781124	836540	0 74130 58293 4	0 74130 58294 1
Valvoline Wiper Standing Display Pack	593202	836581	0 74130 58295 8	





# Auto Appearance Products





# ACCESSORIES

## BUFFING PADS



**3" BURGUNDY MED CUT**  
**HB93**



**3" FINAL FINISH BLACK**  
**HB53**



**3" HD BLUE**  
**HBH3**



**3.5" BLACK FINISHING**  
**HB35**



**3.5" ORANGE CUTTING**  
**HB32**



**6.5" FINAL FINISH -2PK**  
**HB502C**



**6.5" FINAL FINISH-BLUE**  
**CBA0010**



**6.5" HEAVY CUT-ORANGE**  
**CBA008**



**6.5" LAMBS WOOL**  
**CBA0011**



**6.5" MED POLISH-GREEN**  
**CBA009**



**6.5" BLACK FINISHING**  
**SD072650**



**6.5" BLUE HEAVY**  
**SD092650**



# ACCESSORIES

BUFFING PADS • BONNETS



**6.5" PURPLE CUTTING**  
**SD082650**



**6.5" WHITE POLISHING**  
**SD062560**



**7.5" WHITE POLISHING**  
**78-64750**



**7.5" PURPLE CUTTING**  
**78-84750C**



**7.5" BLACK FINISHING**  
**78-74750C**



**7.5" BLUE LIGHT POLISHING**  
**78-94750C**



**10" BONNET**  
**10BONNET**



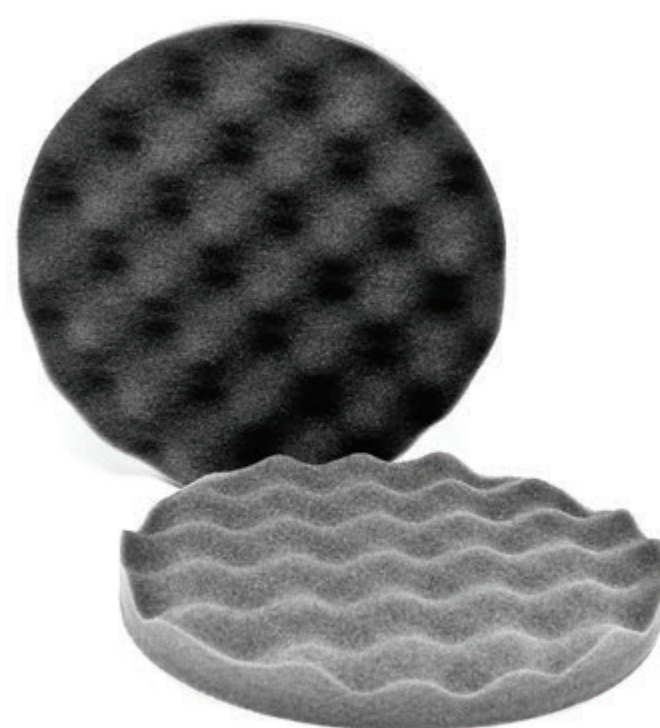
**15" BONNET**  
**15BONNET**



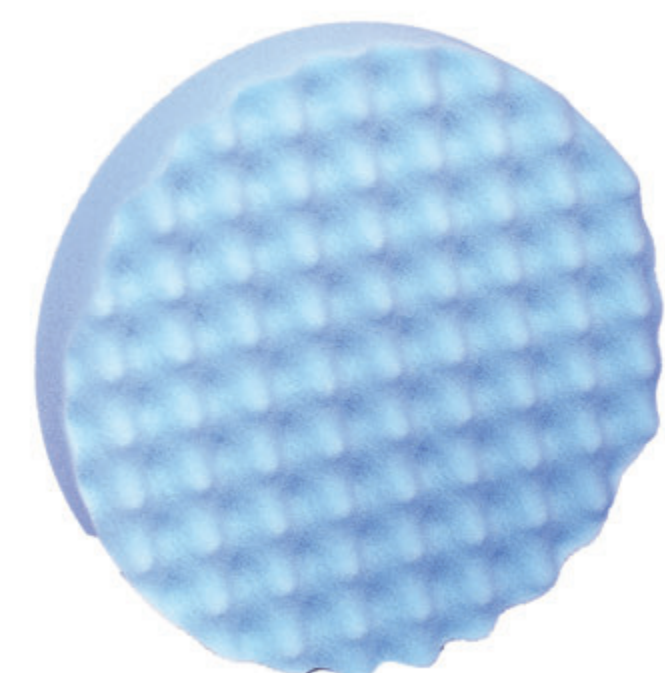
**17" BONNET**  
**17BONNET**



**3M FOAM COMPOUND**  
**5723**



**3M FOAM POLISH**  
**5725**



**3M FOAM ULTRA FINE**  
**5733**



# ACCESSORIES

## BUFFING PADS



**6.5" CW-WHITE**  
**CW64650**



**6.5" CW BLUE**  
**CW94650**



**6" PURPLE FOAM**  
**58-326**



**6" DA-MICRO FIBER CUTTING**  
**DMC6**



**6" DA MICRO FIBER FINISHING**  
**DMF6**



**#1 VELCRO CUTTING PAD**  
**41-125**



**WOOL PAD**  
**41-325D**



**WOOL BLEND PAD**  
**41-425**



**8" DOUBLE SIDED POLISHING**  
**HB711**



**8" DOUBLE SIDED COMPOUND**  
**HB777**



**3" SHEEP SKIN**  
**75-323**



# ACCESSORIES

## BACKER PLATES



**BACKER PLATE 3"**  
**VP3**



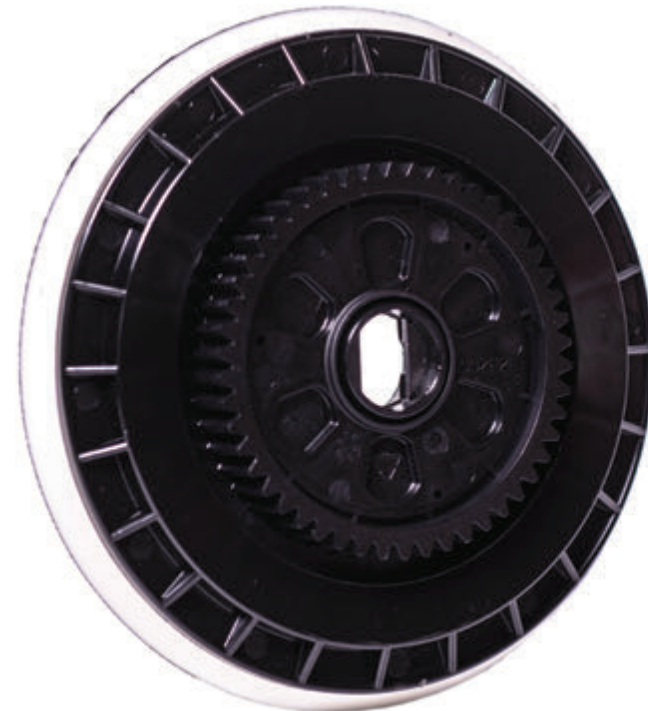
**5" BACKING PLATE**  
**VP5T**



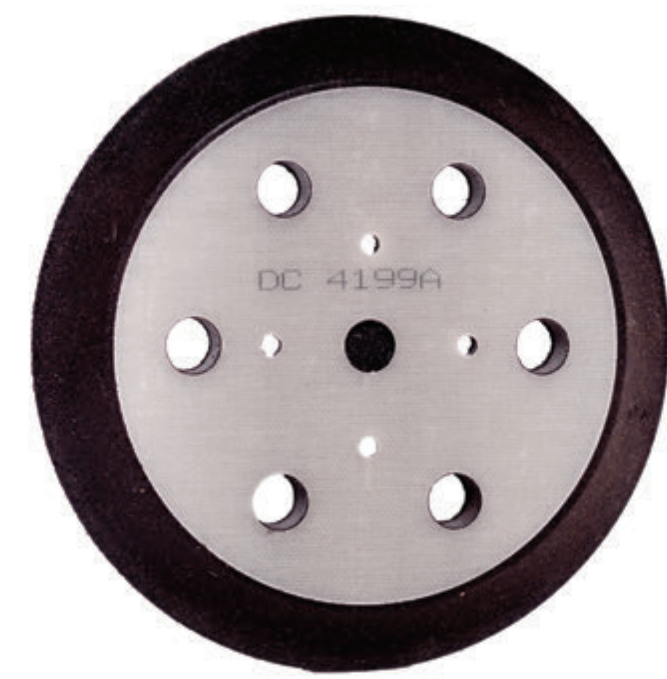
**6" SUPER FLEX**  
**VP606**



**BACKER PLATE 6 7/8"**  
**43-175**



**FLEX-BACKER PLATE**  
**1/2-FX3401 / 342637**



**BACKER PLATE DEWALT**  
**DW4395**



**BACKER PLATE-DELUXE**  
**VP11**



**BACKER PLATE-YELLOW HD**  
**VP11T**



**BACKER PLATE 5" PORTA**  
**CABLE - VP14**



**BACKER PLATE 6" PORTA**  
**CABLE - VP16**



**ADAPTER-DOUBLE SIDED PAD**  
**HBXWA**



**BACKER PLATE**  
**21001P**



# ACCESSORIES

## PAINT CORRECTION PRODUCTS



**PAINT CORRECTION 6" FINE  
PAD - 835118**



**PAINT CORRECTION MEDIUM  
TOWEL - 835119**



**PAINT CORRECTION FINE  
TOWEL - 835120**



**PAINT CORRECTION MEDIUM  
MITT - 835171**



**PAINT CORRECTION FINE MITT  
835172**



**PAINT CORRECTION 5 3/4  
STRAP - 835173**



**MIRACLE CLAY- HD  
200 Gram - M31251**



**MIRACLE CLAY- GREY  
200 Gram - M31221**



**BRITE STIK - GREY  
B80A**



**BRITE STIK - PURPLE  
B81A**



# ACCESSORIES

## BOTTLES



**QUART BOTTLES  
QB/QB 1**



**BOTTLE-KETCHUP  
U30**



**SELECT A/P DRESSING-  
BOTTLE - 593951**



**SELECT EXTERIOR DE-  
GREASER BOTTLE - 593956**



**SELECT EXTERIOR SOLVENT  
BOTTLE - 593958**



**SELECT GLASS CLEANER  
BOTTLE - 593959**



**SELECT INTERIOR BOTTLE  
593953**



**SELECT NON-ACID BOTTLE  
594001**



**SELECT WIPE & SHINE BOTTLE  
594006**



**SELECT TIRE & TRIM BOTTLE  
594003**



**SELECT AP DRESSING  
SILICONE FREE - 789406**



**SELECT WHEEL ACID  
593638**



# ACCESSORIES

BRUSHES • SPIGOTS • FAUCETS



**FAUCET 3/4" WHITE**  
**U94B**



**LARGE HD BRASS BRUSH**  
**15A**



**LARGE BRASS BRUSH**  
**15B**



**SPIGOT 3/4" WHITE**  
**U94**



**WHITEWALL NYLON BRUSH**  
**20B**



**TAN/BLACK SOFT BRUSH**  
**21B**



**HD NYLON WHITEWALL BRUSH**  
**22B**



**SYNTHETIC WHEEL**  
**25B**



**SOFT WHEEL BRUSH**  
**26B**



**SEAHORSE WHEEL**  
**30B**



**GRILL/SPOKE - LARGE**  
**35B**



**GRILL/SPOKE - SMALL**  
**36B**



# ACCESSORIES

## BRUSHES



**TRUCK BRUSH  
40B**



**LONG HANDLE DEMON  
35B**



**INTERIOR UPHOLSTERY  
BRUSH - 60A**



**IRON STYLE BRUSH  
65A**



**5 LEVEL BRUSH  
70NOG**



**5-LEVEL-BRUSH  
70SMA**



**BI-LEVEL GREEN-HARPER  
70H**



**DETAIL BRUSH-TOOTH  
T10**



**DETAIL BRUSH-PAINT  
T11**



**BRASS DETAIL BRUSH  
T12**



**MULTI-PURPOSE BRUSH  
T46**



**PET BRUSH  
T46**



# ACCESSORIES

## BRUSHES



**6" DETAIL VENT**  
**T48**



**PET HAIR ROCK**  
**PHR**



**6" DUEL ENDED VENT BRUSH**  
**244**



**PARTS BRUSH**  
**277**



**CAR DUSTER 26"**  
**25618**



**FOAM PAD CLEANING BRUSH**  
**56612**



**FOAM PAD CONDITIONING**  
**BRUSH - HBPB1**



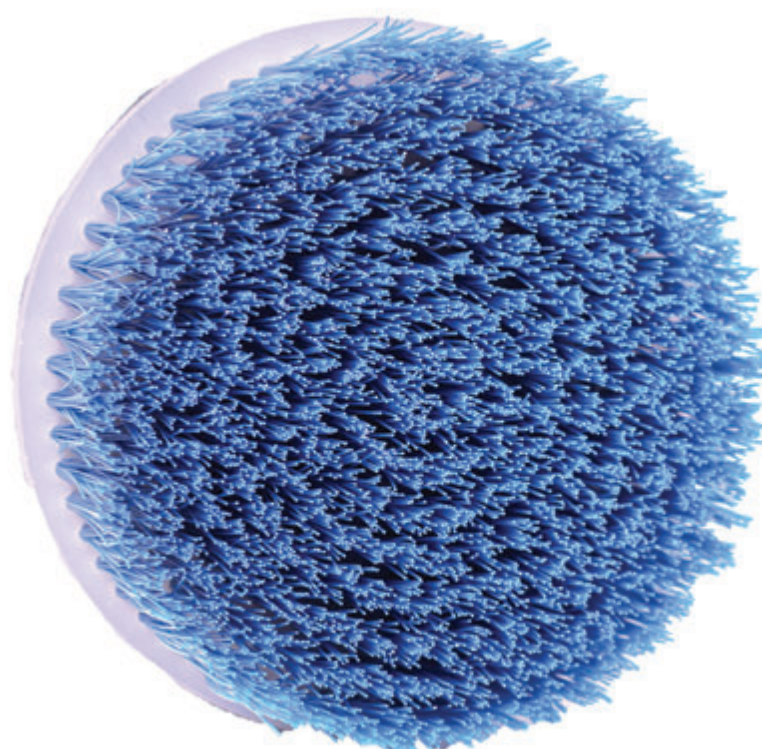
**HOOP STYLE CARPET**  
**E12228**



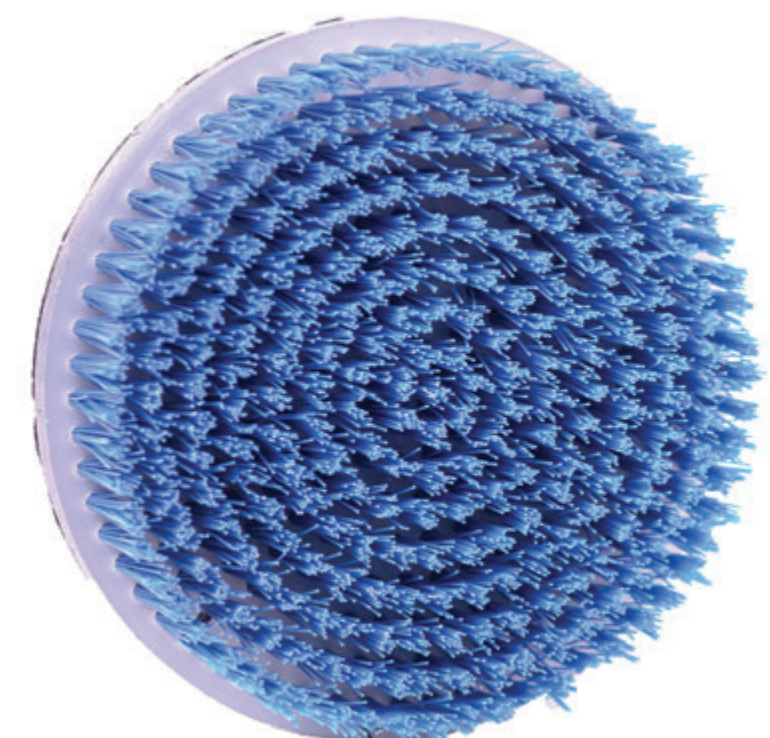
**SCRUB BRUSH**  
**1280**



**LUG NUT BRUSH**  
**LNB-1**



**5" ROTARY W/1.5 BRISTLE**  
**83-024**



**5" ROTARY W/ .875 BRISTLE**  
**83-023**



# ACCESSORIES

POWER WASHERS • SUPPLIES



**POWER WASHER W/ON-OFF**  
**PCS210F**



**POWER WASH HOSE - 50FT**  
**X3/8" - P502**



**POWER WAND COMPLETE**  
**PCSWAND**



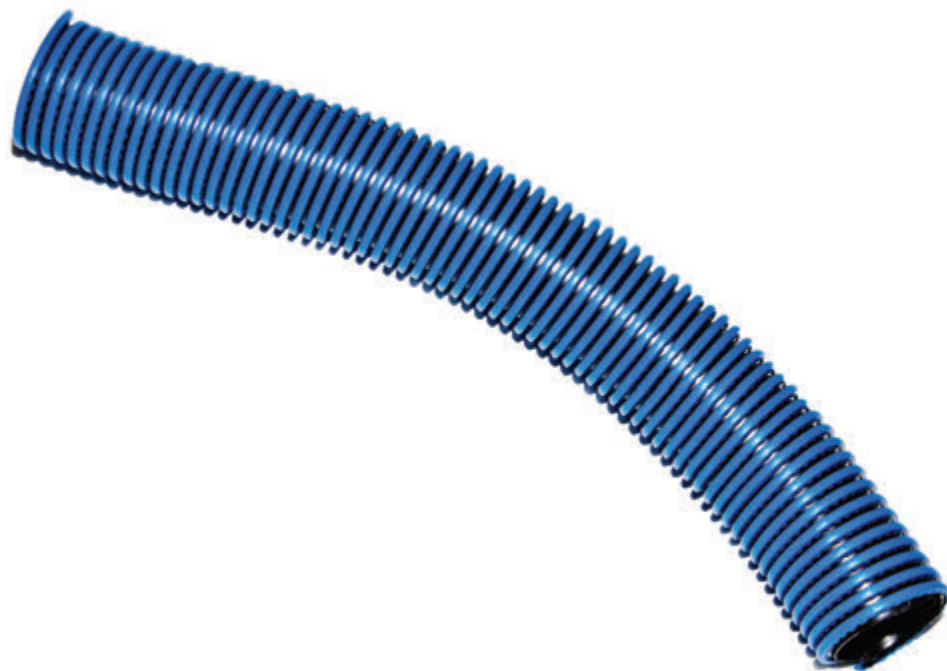
**FLEX PRESSURE WAND**  
**368118**



**TRIGGER GUN - HEAD**  
**YG5000**



**SOFT NOZZLE PROTECTOR**  
**6938**



**VAC HOSE 2" X 25'**  
**E12408**



**VAC HOSE 1 1/2" X 25'**  
**E12409**



**2" SWIVEL CUFF**  
**E12403**



**ADJUSTABLE WATER SPRAY**  
**NOZZLE - 11091**



**POWER SPRAY NOZZLE**  
**11107**



**BEND & SPRAY SPRAYER**  
**SP050**



# ACCESSORIES

EXTRACTORS • SUPPLIES



**MYTEE CARPET EXTRACTOR  
HP120**



**UPHOLSTERY TOOL 3' S/S  
8400**



**FLOOR WAND-HP100  
8390**



**EXTRACTOR HOSE  
15'-COMPLETE - 8501**



**CREVICE TOOL-HP100  
8700**



**SYSTEM MAINTAINER  
3601-Q**



**PIG TAIL-HP100  
AV935**



**PIGLETS-HP100 - 25/1  
G008**



**CREVICE TOOL-VAC 1 1/2\"/>**



**VACUUM NOZZLE - 2\"/>**



**VACUUM NOZZLE - 1 1/2\"/>**



**CREVICE TOOL-VAC 1 1/2\"/>**



# ACCESSORIES

WHEELS • TORNADOR • HEAT GUN  
PURIFIERS



**RANDOM ORBITAL W/ LIGHT**  
**23001**



**ROTARY VARIABLE SPEED**  
**23005**



**DEWALT VARIABLE SPEED**  
**DWP849**



**RANDOM ORBITAL POLISHER**  
**21001**



**FLEX COMPACT 6" POLISHER**  
**FX150**



**FLEX ORBITAL**  
**FX3401**



**MAKITA VARIABLE SPEED**  
**9237CX3**



**TORNADOR TOOL**  
**TT-010**



**TORNADOR BLACK TOOL**  
**TT-020**



**HEAT GUN**  
**22400**



**VILLA ODOR FREE PURIFIER**  
**VILLA1000**



**BUFFING PAD SPUR**  
**U70**



# ACCESSORIES

FLOOR MATS • SEAT COVERS



**FLOOR MATS- 500 COUNT  
UM/500P**



**SEAT COVER 1/2MILL-500 CT.  
ROLL - SC500TB**



**FLOORMAT WATERPROOF 250  
CT - KP60P**



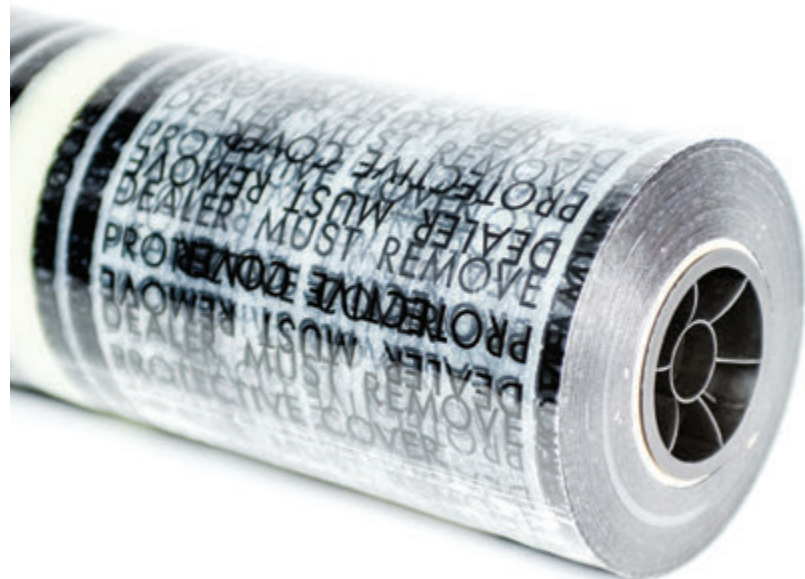
**CARPET MASK  
X007A**



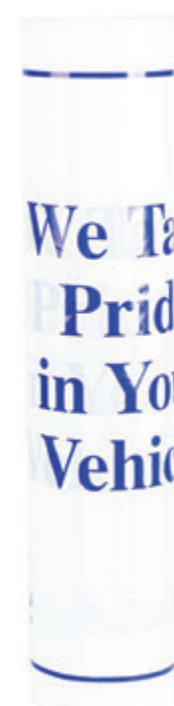
**SEAT COVERS 3/4 MILL 250 CT.  
BOX - SC250TB**



**FLOOR MAT - PHOTO 250 CT.  
KP30PE**



**CARPET ADHESIVE FILM  
CM500PR24-4**



**PLASTIC FLOOR MATS-500 CT.  
ROLL - PMFLOORMAT**



**STEERING WHEEL COVERS-  
500CT. - STWC-500**



**DISPENSING RACK  
89A**



**CARPET MASK DISPENSER  
X007C**



**PARTS BAGS  
PB500**



# ACCESSORIES

GLOVES • SAFETY GLASSES • APRONS  
RESPIRATORS



**NITRILE BLUE GLOVES - 100 CT.  
GNPR (M-L-XL-XXL)**



**NITRILE BLACK GLOVES - 100  
CT. - GPNB (M-L-XL-XXL)**



**NITRILE ORANGE GLOVES - 100  
CT. - GPNO (M-L-XL-XXL)**



**NITRILE BLUE POWDERED-  
100CT. - XN48 (XL)**



**LATEX GLOVES - 100 CT.  
NP104**



**LATEX GLOVES-  
POWDERED-100 CT. - 850035**



**DENIM APRON  
DA-4**



**SOLVENT GLOVES  
AF18**



**APRON-FULL LENGTH-VINYL  
787244**



**RESPIRATORS - 20/1 3M  
7048**



**CHEMICAL GOGGLES  
40661**



**SAFETY GLASSES-CLEAR  
US135**



# ACCESSORIES

HANDLES • SNOW RAKES • SQUEEGEE  
MAT CLAMP



**30" MOSS SQUEEGEE**  
**30SSM**



**COMBO WRINGER BUCKET**  
**MAMA2633BL**



**MOP HEAD - 24 OZ**  
**24M**



**MOP HANDLE - 60"**  
**MH**



**TAPERED HANDLE - 60"**  
**SH**



**SELF LOCK HANDLE-W METAL**  
**TIP - BH**



**MAP CLAMP**  
**X007A**



**SNOW PRO RAKE**  
**SR**



**CALIFORNIA WATER BLADE**  
**20081**



**REPLACEMENT HEAD**  
**MH100**



**MOP BACKING PLATE**  
**MH125**



**HANDLE 55"**  
**MH150**



# ACCESSORIES

PUMPS • SPRAYERS



**METAL DRUM PUMP**  
**366**



**PLASTIC PAIL PUMP**  
**330**



**PLASTIC DRUM PUMP**  
**360**



**BRAKE CLEAN PUMP**  
**10110**



**CHEMICAL SPRAYER**  
**U25**



**SWISS MEX ACID SPRAYER .4  
GAL - 310145**



**SPRAYER ACID-RESISTANT**  
**320ARS**



**SPRAYER CHEMICAL  
RESISTANT - 322CR**



**SPRAYER SMALL 9"**  
**922**



**NON AEROSOL SPOT SPRAYER**  
**19419**



**BLOW GUN DELUXE**  
**770**



**20" BLOW GUN**  
**19387**



# ACCESSORIES

SPONGES • WASH MITTS • CHAMOIS  
STEEL WOOL



**SYNTHETIC CHAMOIS**  
**U51**



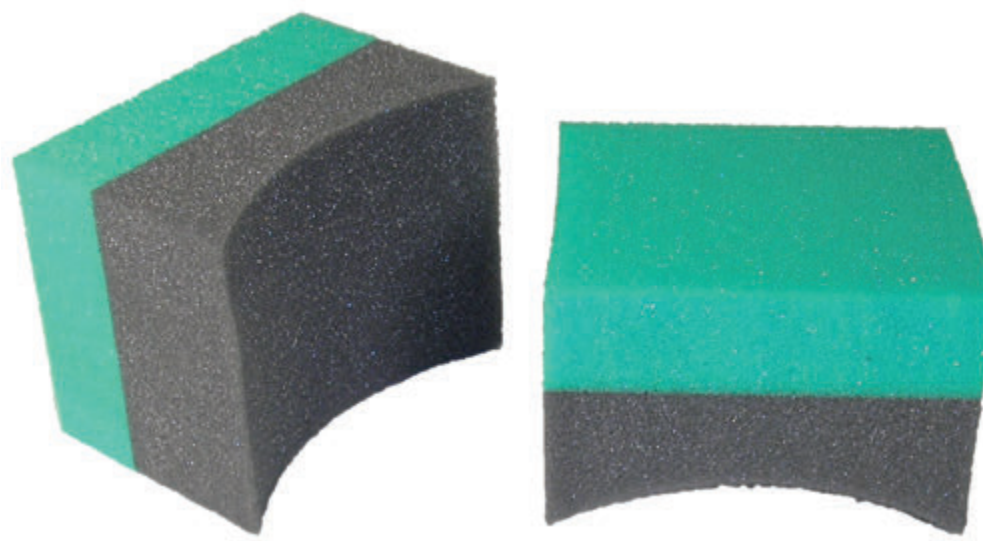
**WATER BANDIT**  
**11066**



**COPAL SPONGE**  
**U54**



**DO ALL PAD**  
**U57**



**TIRE DRESSING APPLICATOR**  
**TDA3**



**BUG SPONGE**  
**U52**



**WASH MITT W/CUFF**  
**U42**



**WASH MITT-MICRO CHENILLE**  
**MCM911**



**BUCKET GRATE**  
**RDS1**



**#00 STEEL WOOL**  
**U72A**



**#0000 STEEL WOOL**  
**U71A**



**#00 STEEL WOOL-REEL**  
**U76A**



# ACCESSORIES

RAZOR BLADES • SCRAPERS • HOLDERS •  
WAX PADS



**RAZOR BLADES – 100 CT**  
**111-01T**



**RAZOR BLADES PLASTIC -100**  
**CT. - U10B**



**PUSH UP HOLDER**  
**U11**



**KD SCRAPER**  
**U12**



**EXTENSION SCRAPER**  
**U13**



**M/P PLASTIC SCRAPERS**  
**PB200 (12 Pack)**



**MICROFIBER PAD-LARGE**  
**565948**



**MICROFIBER WAX PAD-SMALL**  
**565947**



**4" GLASS & DECAL SCRAPER**  
**SCRP-XL**



**WAX APPLICATOR PAD**  
**U55**



**ROUND FOAM PAD**  
**3F**



**MAGIC FOAM ERASER**  
**567624**



# ACCESSORIES

## TOWELS/FIBER CLOTHS



**HAND TOWELS**  
**U106**



**HAND TOWEL PREMIUM**  
**U107**



**NEW HAND TOWELS**  
**U108**



**WINDOW HUCKS**  
**HUCK**



**MIRACLE CHAMOIS**  
**U62**



**25# 100% COTTON**  
**NWK**



**FIBER CLOTH SPECIAL BLUE/  
GREEN/YELLOW 16X16**  
**HT20A/G/Y**



**MICRO TOWEL BLUE/ORANGE**  
**16X25**  
**DDTBMF/DDTOOMF**



**FIBER CLOTH BLUE**  
**14X14-12 PACK**  
**99072-PK**



**WAFFLE MICROFIBER**  
**15X25**  
**HT65W**



**SUPER PLUSH POLISHING**  
**CLOTH**  
**HT1624**



**PREMIUM GLASS CLOTH**  
**20X20**  
**847620**



# PRODUCTS

## AEROSOL DETAIL PRODUCTS



### VESCO GLASS CLEANER PLUS V0009

- Vesco Glass Cleaner Plus is one of Vesco's best glass cleaners.
- It is non streaking and does a great job on other surfaces.



### VESCO SEE THE SPOT GO V0019

- Vesco See the Spot Go is a very powerful aerosol fabric cleaner formulated to remove stubborn stains quickly.
- Effective on both oil-and water based stains. Will remove grease, tar, coffee, wine, urine, lipstick and blood without scrubbing.



### VESCO FOAM AWAY V0041

- Vesco Foam Away is a dry foam Interior cleaner that effectively cleans leather, plastic, fabric and vinyl surfaces.
- It also has a very pleasant scent, and cleans without soaking the material to be cleaned.



### VESCO NON SILICONE DRESSING V1008

- Vesco Non Silicone Dressing is a fast drying formula that will restore luster while shielding against ultraviolet rays.
- It is silicone free, making it safe in most body shops.



### VESCO EXTRA-DUTY UPSIDE-DOWN V0012

- Vesco Extra-Duty Upside Down is a fry foaming aerosol interior cleaner that cleans leather, all plastics, fabric and vinyl surfaces.
- Also has a pleasant scent, and can clean without soaking into the surface.



### VESCO GLASS CLEANER AV0034

- Vesco Glass Cleaner is non streaking and non-smearing.
- It also has a pleasant fragrance and is fortified with ammonia.
- It can be used on many surfaces as a glass cleaner and as a general cleaner.



### VESCO POWER ORANGE AV236

- Vesco Power Orange is one of our best degreasers
- Can be used to clean most asphalt materials in a very quick way.
- This product is made with some orange di-lime materials, making it a fast acting formula.



### VESCO MIST & SHINE V9074

- Vesco Mist & Shine beautifies and protects when used on vinyl, leather, rubber and plastic.
- It is fast drying and restores the luster in most applications.
- It lays flat with little or no wiping.



# AIR FRESHENERS

## AIR FRESHENERS & ODOR ELIMINATORS



### ODOR FOG- 5 OZ. CAN

- HT19025 Odor Fog Autumn Mist
- HT19030 Odor Fog Black Diamond
- HT19035 Odor Fog Sea Breeze
- HT19045 Odor Fog Mountain Air
- HT19060 Odor Fog New Car
- HT19065 Odor Fog Fresh Air
- HT19070 Odor Fog Citrus
- HT19075 Odor Fog Fresh Linen
- HT19085 Odor Fog Vanilla
- HT19090 Odor Fog Tropical Mist
- HT19036 Odor Fog Ocean Fresh
- HT19055 Odor Fog Bubble Gum
- HT19080 Odor Fog Berry Licious



### ODOR ELIMINATOR-20 OZ. CAN

- 18065 Odor Eliminator Fresh Air
- 18070 Odor Eliminator Citrus
- 18075 Odor Eliminator Green Apple



### CAR BRITE ODOR ELIMINATOR-1.5 OZ.

- 578512 Odor Eliminator Fresh-N-Clean
- 578560 Odor Eliminator New Car
- 578578 Odor Eliminator Tropical Escape



### WONDER WAFERS-250 COUNT

- WWS6 Wonder Wafer Jasmine
- WWS11 Wonder Wafer Nu Car
- WWS21 Wonder Wafer Baby Powder
- WWS32 Wonder Wafer Clean Car
- WWS34 Wonder Wafer New Leather
- WWS41 Wonder Wafer Fresh-N-Clean





### LACQUER THINNER 2642

(P)

- Lacquer thinner is a Virgil product used for mixing many paints, and most cleanups.
- Useful for most body shop applications and can be used in other applications as well.



### 3M YELLOW MASKING TAPE

6652 (3/4")

6654 (1 1/2")

6656 (2")

- 3M yellow tape is one of the leading tapes in the body shop industry.
- It comes in 3/4", 1 1/2", and 2" rolls.



### GRAVITY FEED HVLP SPRAY GUN 19033

- This gravity feed HVLP spray gun can be used for many applications.
- Works great with spraying water base tire dressings.



### FINAL WIPE FW

(G) RTU

Final wipe is the final product used just before painting. This solvent-based product can also be used in many other types of applications.



### CLING SHEETING 6728W

This cling sheeting is a product used to cover and protect your vehicle while in the shop or in the spray booth. It is 16 feet wide by 350 feet and can be used for other applications.



### DURAGLAS USC24030

(G)

Duraglas is your all around fiberglass repair product. This is made by USC and can be used in many different applications.



# CARPET & VINYL DYES

CARPET • VINYL • LEATHER



## SEM COLOR COAT FOR VINYL, LEATHER, AND PLASTICS

Color Coat is formulated to match, restore change color on most vinyl surfaces, flexible and rigid plastics, carpet and velour. Color Coat is fade resistant, flexible and is a permanent coating. Color Coat is not a dye.

Currently available in over 50 colors including 3 blacks, 3 clears and a selection of OEM automotive, bus and marine colors.



## HI-TECH VINYL, PLASTIC AND CARPET DYE

HI-TECH is formulated to match, restore or change the color on most vinyl surfaces, and carpets. It's permanent and will not crack, split, peel or rub off. Used to restore or change most original colors.

Currently available in over 40 colors, most colors will match most OEM colors, both in the automotive and marine applications.



# CAR BRITE

POLISHES • GLAZES • WAX



## BUTTER WAX A7 (Q-G)

Butter Wax is a soft yellow cream wax with a banana fragrance that provides a deep “wet look” gloss with moderate protection.



## EASI-OFF BLUE A9-PT

Easi-Off Blue is a blue paste wax containing mild abrasives, silicone and carnauba wax, that removes minor paint imperfections while providing deep-rich gloss and lasting protection.



## EASI-OFF YELLOW A10-PT

Easi-Off Yellow is a paste wax containing silicone and carnauba wax that provides a deep, rich gloss and lasting protection.



## SNAPPY SHINE A18

(G)  
Snappy Shine is a carnauba-based formulation that cleans and protects in one easy step. Apply by hand or with high speed or orbital buffer.



## CRYSTAL SHINE A22 (G)

Crystal Shine is a mildly aggressive pink polish that will remove light scratches, swirl marks and oxidation, imperfections and providing a deep shine.



## FAST WAX AV36

(G)  
Fast Wax is a yellow cream wax containing mild abrasives, cleaners, silicone and lubricants that removes minor paint imperfections and providing a deep shine.



## SLEEK A39 (Q)

Sleek is a mildly abrasive black polish formulated to safely remove light scratches and swirl marks while providing a deep rich shine.



## CUTTING GLAZE

Cutting Glaze is a mildly aggressive pink glaze that removes excessive swirl marks and light to medium scratches and oxidation. Also leaves a deep gloss with minimal residue.



# CAR BRITE

POLISHES • GLAZES • WAX • COMPOUNDS



## LASER BRITE A48

(G)

Laser Brite is a mildly aggressive extremely durable white polish that removes light scratches and oxidation and swirl marks while providing a deep rich gloss.



## TROPIGLO A50B

(G)

Tropiglo is a white carnauba-based cleaner wax with a tropical fragrance formulated to clean and protect in one step. Produces a deep shine and it can be applied with high speed or orbital or by hand.



## WEATHER SHIELD 2 AV65

(G)

Weather Shield 2 is a light gray fortified paint sealant with a spice fragrance that generates an extremely durable-deep gloss.



## SHAKE & SHINE A95

(G)

Shake & Shine is a strawberry colored express cleaner/wax with a nice tropical fragrance that produces a glass-like finish in minutes.



## WORKOUT 1500 2 BV60

(G)

Workout 1500 2 is a mildly aggressive blue/green lotion that removes up to 1500 grit sanding scratches from most painted surfaces.



## WORKOUT 1000 B65

(G)

Workout 1000 is a moderately dark pink lotion that removes up to 1000 grit sanding scratches from most painted surfaces.





## TRILOGY FINISHING POLISH A451

(G)

A creamy, light-cut, body shop safe, oil-based finishing polish formulated to remove swirl marks and micro-scratches after polishing. The low dust formula makes for fast and easy clean up, also is silicone-free.



## SELECT POLYMER SEALANT B106

(Q)

A body shop safe paint sealant with a pleasant fragrance that provides an intense shine and a nice gloss. Great for use on new paint as product will not prevent the curing process.



## TRILOGY POLISH B601

(G)

A creamy, light-cut, body shop safe, oil-based polish formulated to remove 1500 to 2000 grit wet sand scratches, light oxidation and light scratches from factory and refinished single stage paint and clearcoat. The low-dust formula makes for fast and easy clean-up, also silicone-free.



## TRILOGY COMPOUND B651

(G)

A creamy, body shop safe, oil-based compound formulated to remove 1200 to 1500 grit wet sand scratches, moderate oxidation and orange peel from factory and refinished single stage paint and clearcoat. The low-dust formula makes for fast and easy clean-up, also is silicone-free.



## BLACK PEARL SiO2 CERAMIC COATING BP06

Provides a lasting, impermeable barrier that protects surfaces against the harshest of elements while providing a deep, rich gloss. The SiO2 formula is a liquid glass coating resistant to scratches, acid, salt, chloride and alkaline making it far durable than wax. Up to 10X harder than today's paint finishes. Last's up to 5 years, while keeping your vehicle cleaner longer.



## BLACK PEARL SiO2 CERAMIC SPEED SPRAY BP07

The fastest way to ceramic protection, also enhances performance of Black Pearl Ceramic SiO2 Coating. Lasts up to 1 year, with a mirror like finish. Protects against scratches, swirl marks, insects, tree sap, bird droppings, acid rain, oxidation, fading, ultra-violet light and water spots.



## BLACK PEARL SiO2 CERAMIC COATING KIT BP08

The Black Pearl SiO2 Ceramic Coating Kit, includes the following:

- 1.7 oz / 50ml Ceramic Coating
- Applicators
- Removal Cloths
- Polishing Cloths
- Nitrile Gloves





### WHAMO E1

**(G-P-D) DILUTE UP TO 1:1**

- Whamo is colorless, heavy duty water-based tire cleaner made to remove scuff marks, dirt, grease and road film from tires and whitewalls.
- Great for removing the factory whitewall blue protectant.



### WHEEL ACID HD E11M

**(G-P) DILUTE UP TO 1:4**

Wheel Acid HD is a clear heavy duty concentrated acid based liquid formulated to clean and brighten most metal wheels.



### ALL SOL F4

**(G-P)**

All Sol is a clear, fast drying, ready-to-use body prep solvent formulated to remove grease and tar and wax from most exterior surfaces.



### ADHESIVE LABEL REMOVER F7

**(G-P)**

Adhesive Label Remover is a ready-to-use fast drying clear liquid that quickly and easily removes adhesive labels from painted, metal, glass and plastic surfaces.



### MAG-ALUM BRIGHTENER E11A

**(G-P)**

**DILUTE 1:1 CHROME**

**DILUTE 1:5 MAGNESIUM**

**DILUTE 1:15 ALUMINUM**

Mag-Alum Brightener is a clear, heavy duty concentrated acid-based cleaner and brightener for all type's of wheels.



### WHITE LIGHTING E11J

**(G-P)**

A medium duty, etching wheel cleaner formulated to clean and brighten chrome, clear coated, and Mag wheels. Also safe for use on plastic wheel covers, product is ready to use.



### ERADICATOR F6

**(G-P)**

- Eradicator is a colorless body prep solvent formulated to remove grease and tar and wax from exterior surfaces.
- A blend of highly refined solvents and surfactants to deliver our best solvent.



### BODY PREP SOLVENT FV10

**(G-P)**

- Body Prep Solvent is a easy-to-use solvent that quickly and safely removes grease, tar, and wax from exterior surfaces.
- Excellent for using as a interior spot remover.



# CAR BRITE

## INTERIOR CLEANERS • CLEAN ALL HEAVY DUTY



### X3 FABRIC CLEANER & PROTECTANT 565511

**(G-P-D)**

X3 Fabric Cleaner & Protectant is a clear fresh & clean scented, interior cleaner, deodorizer and protectant in one. Formulated to clean today's advanced fabrics without an extractor.



### CARPET & UPHOLSTERY CLEANER 780543

**(G) DILUTE 1:10**

Carpet & Upholstery Cleaner is a gold colored carpet & upholstery cleaner with a citrus fragrance that removes dirt, grime and stains from most interior fabrics.



### CLEAN ALL E2

**(G-P-D) DILUTE 1:5**

Clean All is a pink medium to heavy-duty water based cleaner degreaser with a citrus fragrance that removes oil, grease and grime from all surfaces.



### BLUE MAX E4

**(G-P-D) DILUTE UP TO 8:1**

Blue Max is a blue, light-to-medium duty water based general purpose cleaner with a citrus scent. Features a high penetrating foam made for most interior and exterior uses.



### XTRA DUTY/ XTRA DUTY PLUS E6/ E6B

XTRA Duty/XTRA Duty Plus is a white dry foaming interior cleaner that has a mint fragrance that cleans vinyl, leather, rubber, plastic and fabric without soaking, reducing the drying time.



### XTRA DUTY UPSIDE-DOWN E12

XTRA Duty Upside-Down is a white dry foaming interior cleaner with a mint fragrance that cleans vinyl, leather, rubber, plastic and fabric without soaking, reducing the drying time.



### UPHOLSTERY & CARPET CLEANER E18

Upholstery & Carpet Cleaner is a dry foaming carpet and fabric cleaner that cleans and deodorizes in one step.



### BRITE SPOT E50

**(G) DILUTE 4:1**

Brite Spot enzyme-based spot remover with a herbal fragrance, formulated to lift protein-based stains, as well as dirt and grease.



# CAR BRITE

## FLOOR & GENERAL PURPOSE CLEANERS



### HOT STUFF E7

**(G-P-D) DILUTE UP TO 1:15**

Hot Stuff is a purple HD water based general purpose cleaner degreaser with a low foaming action. Also phosphate & NPE-free.



### CITRUS MP E13D

**G-P-D) DILUTE UP TO 1:10**

Citrus MP is a yellow light duty, water-based general purpose cleaner with a citrus scent. Features a biodegradable formula for both exterior and interior use. Also it's phosphate and NPE-Free.



### FALL OUT GEL E38-G

Fall Out Gel is a thick drying gel containing oxalic acid that safely & effectively removes metallic fallout particles embedded in painted surfaces.



### KLEARLY ORANGE GLASS CLEANER E8F

**(P) DILUTE UP TO 1:4**

A streak-free glass cleaner with a citrus fragrance that quickly removes dirt, bugs, smoker's haze, vinyl fog and road grime from glass, chrome, and other smooth surfaces.



### SURFACE CLARIFIER E111

**(G)**

Surface Clarifier is a clear acid based liquid that safely and effectively removes water spots from painted, chrome, and glass surfaces.



### BIO FLOOR CLEANER 782297

**(D) DILUTE UP 1:8**

Bio Floor Cleaner is a water-based heavy duty floor cleaner that can remove dirt, grease and grime from industrial flooring. Formulated with biodegradable surfactants it's phosphate & NPE-free.



### GLASS CLEANER E9 RTU

Glass Cleaner is a alcohol based glass cleaner that quickly and easily cleans any automotive glass surface, It features a dry white foam that is extremely easy to apply.



### GLASS CLEANER 20/20 PERFECT 676331

**(G) RTU**

Glass Cleaner 20/20 Perfect Vision is a teal blue premium glass cleaner that quickly removes dirt, bugs, smokers haze, vinyl fog and road grime from any glass surface without streaking.



# CAR BRITE

## AIR FRESHENERS & ODOR ELIMINATORS



### TERMINATOR GREEN APPLE E18A

**(G) DILUTE UP TO 1:1**

Terminator Green Apple is a ready-to-use liquid that can eliminate odors from vehicle interiors. It kills the bacteria, mold and mildew that causes the odor and features a pleasant fragrance.



### TERMINATOR WILD CHERRY E13B

**(G) DILUTE UP TO 1:1**

Terminator Wild Cherry is a ready-to-use liquid that can eliminate odors from vehicle interior. It kills the bacteria, mold and mildew that causes the odor and features a pleasant fragrance.



### TERMINATOR CITRUS E18D

**(G) DILUTE UP TO 1:1**

Terminator Citrus is a ready-to-use liquid that can eliminate odors from vehicle interiors. It kills the bacteria, mold and the mildew that causes the odor and features a pleasant fragrance.



### TERMINATOR NEW SCENT E18E

**(G) DILUTE UP 1:1**

Terminator New Scent is a ready-to use liquid that can eliminate odors from vehicle interiors. It kills the bacteria, mold and the mildew that causes the odor and features a pleasant fragrance.



### TERMINATOR SIMPLY FRESH E18F

**(G) DILUTE UP TO 1:1**

Terminator Simply Fresh is a ready-to-use liquid that can eliminate odors from vehicle interiors. It kills the bacteria, mold and the odor and features a pleasant fragrance.



### ODOR ELIMINATOR RTU

Odor Eliminator is a single use odor neutralizer that eliminates offensive odors from the vehicles interior. Three fragrances:

**#578578 Tropical Escape**

**#578569 New Car**

**#578512 Fresh & Clean**

## AIR FRESHENERS

### RTU

Available in several fragrances

- E19A-G Baby Powder
- E19H-G Cherry
- E19C-G Coconut
- E19I-G Vanilla
- E19D-G Watermelon
- E19J-G Leather

- E19E-G New Car
- E19K-G Jasmine
- E19F-G Black Gold
- E19L-G Strawberry
- E19G-G Green Apple
- E19-G Fresh Air







### LIKE NEW C6

**(G-P) DILUTE 1:4**

Like New is a colorless dressing formulated without silicone to be used in body shops.



### CHERRY SHINE CONCENTRATE DRESSING C4L

**(G-P) DILUTE 1:4**

Cherry Shine Concentrate Dressing is a premium white, high-gloss dressing with a cherry fragrance that shines, protects and restores. Use on rubber, plastic and vinyl interior & exterior surfaces.



### LEATHER CONDITIONER & CLEANER C44L

**(G)**

Leather Conditioner & Cleaner is a milky white leather lotion that cleans and conditions and has a leather fragrance. Can be used safely on most leather surfaces to clean while replacing the leather's natural oils.



### ULTIMATE WATER BASE # C45

**(G-P)**

Ultimate Water Base is a thick light blue high gloss dressing with a cherry fragrance that shines and restores moisture. For use on rubber, plastic and vinyl interior and exterior surfaces.



### LEATHER CONDITION 2 CV46

**(G)**

Leather Condition 2 is a thick tan leather conditioner with a leather fragrance formulated with a unique blend of lanolin, mink oil and neatsfoot oil.



### HIGH GLOSS DRESSING CL 780715 780716

**(G-P)**

High Gloss Dressing CL is a purple gloss dressing with a strawberry fragrance that provides a gloss finish on most exterior surfaces.



### HYPER SHINE 2 780804

Hyper Shine 2 is a purple high gloss dressing with a grape fragrance that provides a deep, rich shine with a protective barrier for exterior rubber, and plastic and vinyl surfaces.



### QUICK KOTE DETAILER G008H

Quick Kote Detailer is a easy to-use high gloss fast drying silicone coating that treats, shines and protects most plastic, vinyl and metallic surfaces.





### PURPLE DRESSING 2 CV08F

(P)

Purple Dressing 2 is a purple high gloss dressing with a grape scent that provides a deep, rich shine and a protective barrier for most exterior rubber, plastic, and vinyl surfaces.



### BUMPER KOTE C10-Q

Bumper Kote is a polymer gel formulated to restore most faded bumpers and trim.



### BRITE SHINE 2 CV3T (G)

Brite Shine 2 is a blue ready-to-use, high gloss, solvent-based dressing that features a bubble gum scent, dries quickly, and contains silicone.



### CAROLINA HI GLOSS C4T

(P)

- Carolina Hi Gloss is a white low viscosity dressing with a cherry fragrance that shines, protects and restores moisture.
- Used for rubber, plastic, and vinyl exterior surfaces.



# CAR BRITE

## SELECT PRODUCTS

### CAR BRITE SELECT IS MORE THAN A PRODUCT LINE. IT IS A SYSTEM DEVELOPED TO ASSIST CUSTOMERS.

- Control costs with a built-in proportion system
- Ensure compliance with local, state, and federal regulations.
- All products are VOC compliant, phosphate and nonylphenol ethoxylate-free.
- SDS ring binder attached to rack.
- Effectively train employees with a turn-key system that help ensure a quality job and a consistent process
- Color-coded products and labels help with reducing confusion and misuse.
- Video training provided along with a shop poster to reinforce the process.
- Organize the detail bay with a custom mobile rack.



### SELECT COLOR CODED BOTTLE'S

- 593638 • Acid Wheel Cleaner
- 593951 • All Purpose Dressing
- 593953 • Interior Cleaner
- 593956 • Exterior Cleaner & Degreaser
- 593958 • Exterior Solvent
- 593959 • Glass Cleaner
- 594001 • Non Acid Wheel & Tire Cleaner
- 594003 • Tire & Trim Dressing
- 594006 • Wipe & Shine
- 851645 • Omni Brite (Beetle Juice)



### SELECT TIRE & TRIM GEL 676335 (P) RTU

Select Tire & Trim Gel is a high gloss solvent based dressing that restores and protects tires and exterior trim. The gel element makes it very easy to use and help eliminate the slinging of the product.



### SELECT AP DRESSING SILICONE FREE 702261-P RTU (G)

Select AP Dressing Silicone Free is a very friendly product that can be used in your body shop. It helps restore and protects tires and other exterior trim, while leaving a nice gloss and protection.





### SELECT CAR SOAP 593714-P

**(P-D) DILUTE UP TO 1:320**

- Select Car Soap features the hyper suds technology, with a blend of the latest surfactant/polymer chemistry.
- It is also VOC compliant body shop safe and is also free of phosphates.



### SELECT WHEEL ACID 593724

**(P) RTU**

- Select Wheel Acid is a heavy-duty formula containing acid that quickly and effectively removes dirt.
- Also removes embedded brake dust and heavy road film from most wheels.



### SELECT ALL PURPOSE DRESSING 593730-P

**(G-P) DILUTE UP TO 1:4**

- Select All Purpose Dressing is a high gloss, water-based dressing that shines and protects interior and exterior rubber, plastic and vinyl surfaces.
- Great on most engine compartments “like new” appearance



### SELECT TIRE & TRIM 593775-P

**(P) RTU**

- Select Tire & Trim is a high gloss solvent based dressing that restores and protects tires and exterior trim, while generating a durable “wet-look” shine.
- This product is VOC compliant.



### SELECT INTERIOR & EXTERIOR CLEANER 593835

**(G-P) DILUTE 1:4 EXTERIOR  
DILUTE 1:8 INTERIOR**

- Select Interior & Exterior Cleaner is a cleaner that can be used in interior and exterior applications including rubber, plastic, vinyl, leather and upholstery.
- This also is VOC compliant, and body shop safe.



### SELECT GLASS CLEANER 593902

**(G-P) DILUTE 1:30**

- Select Glass Cleaner is a streak-free formula that removes dirt, smoke & road film from glass and chrome
- It is also safe on most tinted windows, and is VOC compliant and phosphate free.



### SELECT NON ACID WHEEL CLEANER & TIRE CLEANER 594150

**(G-P) DILUTE 1:4**

- Select Non Acid Wheel Cleaner & Tire Cleaner is a versatile, non-acid concentrated formula that safely cleans both wheels and tires.
- It effectively removes dirt, brake dust and road film from all wheel types.



### SELECT WIPE & SHINE 594392

**RTU (G-P)**

- Select Wipe & Shine is an easy-to-use, spray express wax featuring NANO technology.
- It removes light surface contaminants, also generates a high gloss finish and protects the painted surface from UV damage.



# CAR BRITE

## CAR WASH & TUNNEL PRODUCTS



### CHERRY BOMB D17A (G-P-D)

**DILUTE 5 oz / 5 GAL**

- Cherry Bomb is a thick highly concentrated red liquid soap with a cherry fragrance.
- It's long lasting foam lifts dirt in suspension for a film-free rinse.



### CAROLINA WASH & WAX D17B (P-D)

**DILUTE 5 oz / 5 GAL**

- Carolina Wash & Wax is a highly pink liquid soap with a cherry fragrance.
- It's rich foam and carnauba wax provides a spot-free rinse.



### CHERRY BOMBER D17J-G/P

**(G-P) DILUTE 5 oz / 5 GAL**

- Cherry Bomber is a red liquid soap that is concentrated with a cherry fragrance.



### OMNI BRITE (BEETLE JUICE) 780506 780508

**(G-P, E3D) DILUTE 10:1**

- Omni Brite (Beetle Juice) is a yellow specialty water-based cleaner formulated to remove stubborn insect residue from most exterior paint, chrome, and glass.



### PRO CITRUS PREP AE207

**(D) DILUTE UP TO 300: 1**

- Pro Citrus Prep is a highly citrus product used in most applications for hand or most car washes.
- It also has a pleasant fragrance.



### PRO CLEAR COAT AE314-K AE315-K AE316-K

**DILUTE UP 300: 1**

- Pro Clear Coat is a conditioner used with most car washes it's available in red, yellow and blue.



### PRO HANDS OFF AE336

**(D) DILUTE UP 100:1**

- Pro Hands Off is a concentrated product used in many applications in the car wash or in the detail area.



### CLEARCOAT SEALER & DRYING AGENT AE489

**(P-D) DILUTE 500: 1**

- Clearcoat Sealer & Drying Agent is a highly concentrated spray-wax aid formulated to promote water shedding and shines all vehicle surfaces.



# MEGUIARS



## MEGUIARS DA MICROFIBER FINISHING DISC 6" DMF6

- New microfiber disc technology refines surface to a high gloss finish
- Engineered foam interface for optimal cutting efficiency, and controlled conformability
- Optimized for use with DA Microfiber Finishing Wax-D30116



## MEGUIARS PRO SPEED COMPOUND M10032

**RTU 32 oz.**

- Meguiars Pro Speed Compound is a fast cutting body shop safe compound with advanced technology designed for the professional.
- It can quickly remove 1200 grit and finer sanding marks for easier polishing.
- Also removes deep scratches/acid rain or severe swirls and holograms.



## MEGUIARS HI-TEC YELLOW LIQUID WAX M2616

**RTU 16 oz.**

- Meguiars Hi-Tec Yellow Liquid Wax is a premium yellow carnauba wax blended with silicones, polymers, and other waxes.
- Adds richness and depth of color.
- Provides a ultimate high gloss protection to any surface.



## MEGUIARS MIRROR GLAZE ULTRA FINISH POLISH M10532

**RTU 32 oz.**

- Meguiars -Mirror Glaze Ultra Finish Polish helps revitalize those dull and overlooked surfaces by getting rid of oxidation, stains, and scratches.
- Made with super-micro abrasive technology or an ultra-fast cutting polish.



## MEGUIARS MIRROR GLAZE ULTRA FINISHING COMPOUND M20532

**RTU 32 oz.**

- Meguiars Mirror Glaze Ultra Finishing Compound is specifically manufactured to eliminate minor scratches and swirl marks while retaining an excellent brilliance on dull surfaces.
- Removes swirl marks and light defects, while leaving a wet gloss look.



## MEGUIARS DA MICRO FIBER CORRECTION COMPOUND D30032

**RTU 32 oz.**

- Meguiars DA Micro Fiber Correction Compound is a super-micro abrasive technology that quickly removes moderate defects with a high gloss, with no mess or sling, low dusting for easy clean up.



## MEGUIARS DA MICRO FIBER FINISHING WAX D30116

**RTU 8 oz.**

- Meguiars DA Micro Fiber Finishing Wax is specifically formulated to optimize the surface after applying the DA Microfiber Correction Compound. Rich blends of polymers silicones and carnauba for high gloss protection.



## MEGUIARS DA MICRO FIBER POLISH D30216

**RTU 16 oz.**

- Meguiars DA Micro Fiber Polish is a specifically formulated to effectively remove DA haze after DA Compound applications.
- It's engineered formula will remove compounding DA haze, applies very easy and removal is minimal.



# MENZERNA



## **MENZERNA POWER LOCK POLYMER SEALANT PL88P**

Menzerna Power Lock Polymer Sealant is a high gloss easy to apply, that will give your vehicle paint a durable shine with long protection. It's blended with the latest synthetic polymer technology that helps with resisting all elements. Use with a rotary, orbital, or by hand with foam pads and micro-fiber cloth.

RTU 16 oz.



## **MENZERNA SUPER/HEAVY CUT COMPOUND M300Q/M400Q**

Menzerna Super/Heavy Cut Compound This is a high performance compound that leads the field in the removal of sanding marks. Ideal for the professional detailer, removes most 1200 grit sanding marks. This is due to using the latest technology with a divisible polishing grit. Use with a rotary wheel, foam pads, and lambs wool.

RTU



## **MENZERNA SUPER FINISH 3500 POLISH M3500-G**

Menzerna Super Finish 3500 Polish is the latest advanced solution. It will help remove defects faster with less dusting and minimal polish residue. Engineered to exceed the highest standards of quality. Use with a rotary, orbital, or by hand with foam pads and micro-fiber cloth.

RTU 128 oz.



## **MENZERNA SUPER FINISH PLUS POLISH M3800Q**

Menzerna Super Finish Plus Polish will provide a show car finish with a ultimate deep gloss. It will also remove polishing marks, micro-scratches and holograms with genuine star qualities. Use with a rotary, orbital, or by hand with foam pads and micro-fiber cloth.

RTU 32 oz.



# MOTOR CITY



## HIGH GLOSS MC1V (G-P-D)

- High Gloss is a VOC compliant, solvent-based, high gloss, ready to use dressing that is purple, features a grape scent and contains silicone.



## PURPLE STUFF MC2V (G-P-D)

**Dilute up to 30:1**

- Purple Stuff is a concentrated, purple, heavy-duty, water based cleaner degreaser which is low foaming, highly alkaline and formulated for most surfaces.



## WASH & WAX MC3 (G-P-D) Dilute 128:1

- Wash & Wax is a high foaming liquid car soap that cleans and shines exterior vehicle surface fortified with carnauba wax which helps with sheeting the water from the surface.



## GLASS BRIGHT MC4V (G-P)

- Glass Bright is a green ready to use, liquid glass cleaner that contains a blend of alcohol and grease-cutting agents.
- It is also has soap and ammonia free.



## WHEEL BRIGHT MC5 (G-P) Dilute 1:1

- Wheel Bright is a fast acting, acid-based wheel cleaner that safely removes dirt, grime and brake dust from all types of wheels.



## GREASE CLEAN MC6 (P-D) Dilute up 15:1

- Grease Clean is a powerful liquid cleaner that is versatile in a concentrated form.
- It is an excellent degreaser that work great on most surfaces.



## NON-SILICONE DRESSING MC7V (G-P-D)

- Non-Silicone Dressing is a body shop safe, solvent-based high gloss dressing that shines and protects rubber, plastic surfaces.
- This is a ready-to-use transparent dressing that's easy to apply.



## WHITEWALL CLEANER MC8

**(G) Dilute 1:1**

- Whitewall Cleaner is a highly concentrated tire & whitewall cleaner which brings out the white in whitewalls.



# MOTOR CITY



## CAR WASH CONCENTRATE MC9 (G-P-D) Dilute 1:128 (5 oz per 5 gals)

- Car Wash Concentrate is a high foaming, highly concentrated car soap formulated to quickly remove dirt and light soils from all vehicle's surfaces.



## PRO-BLUE MC10 (G-P-D) Dilute up to 8:1

- Pro-Blue is a powerful liquid cleaner that is extremely versatile.
- It is an excellent degreaser that quickly removes most greases and soils from most surfaces.



## VEHICLE SPRAY WAX MC12 (P-D) Dilute 1: 128 (5oz per 5 gals)

- Vehicle Spray Wax is a silicone-free, highly concentrated spray wax/rinse aid formulated to promote water shedding.
- It can be applied through a arch or spray bottles.



## HD MACHINE FLOOR CLEANER MC15 (P-D) Dilute up 8:1

- HD Machine Floor Cleaner is a highly alkaline, concentrated cleaner that safely cleans most automotive and industrial floors.



## SWIRL OUT MC16 (G)

- Swirl Out is a great product to remove swirls on the painted surface.



## GLASS CLEANER-CONCENTRATE MC19V

(G) Dilute 10:1

- Glass Cleaner-Concentrate is a great product for most glass cleaning projects.
- It can mixed with most blenders or by the quart/gallon.



## WATER BASE DRESSING MC21 (G-P)

- Water Base Dressing is an easy-to-apply, water-based dressing that shines and protects most surfaces.
- It features a cherry scent and contains silicone.



## HD NON ACID WHEEL CLEANER MC22 (G-P)

- HD Non Acid Wheel Cleaner is a concentrated HD, water based wheel cleaner that is safe for most wheel types
- Low foaming, high alkaline formulation without acid.



# MOTOR CITY



## **SUPER SPECIAL DEGREASER MC39**

**(P-D)**

**Dilute up 20:1**

Super Special Degreaser is a HD cleaner/degreaser that works great on most surfaces. This is a low foaming degreaser that works great with most floor machines.



## **TUNNEL WASH MC25**

**(P-D)**

**Dilute 2-3 oz per gal**

- Tunnel Wash is a concentrated liquid soap featuring a high stable foam that helps remove dirt and grime.
- It contains some carnauba wax which provides beading and a great shine.



## **WIPE & SHINE MC27**

**(G)**

- Wipe & Shine is a VOC compliant spray on wipe off cleaner that safely removes dirt, grime and brake dust from all types of wheels.
- It also leaves a nice shine with protection.



## **KRYSTAL POLISH MC29V**

**(G)**

Krystal Polish is a aggressive pink polish that removes light scratches, oxidation and most swirl marks.

- While providing a durable gloss-contains silicone.



## **BODY PREP SOLVENT MC24V**

**(G-P)**

Body Prep Solvent is a easy-to-use solvent that quickly and safely removes grease, tar and wax from most exterior surfaces, and formulated for most surfaces.



## **WAX & DRY MC26**

**(G)**

- Wax & Dry enables you to add gloss and provide protection as you dry off your vehicle!
- Can be applied to a wet or dry surface.
- It is also safe on all painted surfaces.



## **HD EXTRACTOR MC28**

**(G) Dilute 1:30**

- HD Extractor is a amber colored extraction fluid with a citrus fragrance.
- Can be used with a extractor or by hand.



## **NEW SCENT MC30**

**(G) Dilute 1:1**

- New Scent is a ready-to-use liquid that eliminates odors from vehicle interiors.
- It kills the bacteria, mold and leaves a pleasant fragrance.



# MOTOR CITY



## **SIMPLE AIR FRESH MC32**

**(G) Dilute 1:1**

- Simple Air Fresh is a ready-to-use liquid that eliminates odors from vehicle interior.
- It kills the bacteria, mold and features a pleasant fragrance.



## **BUG OFF MC34**

**(G) Dilute up to 10:1**

- Bug Off is a formulated product made to remove stubborn insects from your vehicle surface.



## **SUPER BLUE DRESSING MC35V**

**(P-D)**

- Super Blue Dressing is a RTU high gloss solvent based dressing.
- Great for most rubber tire applications.



## **CARNAUBA WAX MC37**

**(G)**

- Carnauba Wax is a high quality carnauba-based formulation that cleans and protects in one easy step.
- Apply by hand or with high speed or orbital buffer.



## **POLISH GLAZE MC38**

**(G)**

- Polish Glaze is a semi-abrasive, durable, brown polish containing silicone that is formulated to remove light to moderate swirls from the painted surface.



## **HEAVY COMPOUND MC44**

- Heavy Compound is a aggressive brown lotion that safely removes 800-1000 grit sanding scratches from most painted surfaces.



# NUANCE SOLUTIONS

## NUANCE SOLUTIONS

For nearly 40 years, Actiblend Systems has developed and offered field-proven, highly effective, super-concentrated industrial cleaners. The Quantum series of products is the next leap forward in concentration technology. The program is comprised of several new cleaners, carefully chosen to satisfy any cleaning need, and is paired with custom-designed dilution control devices to make the application of these products simple, safe, fast and affordable. With Quantum products you use the minimum amount and get the maximum results.

### FEATURES:

**Unique Chemistry-**After years of research, our chemists have formulated products with the highest level of concentration, which results in the best cleaning efficacy ever at extreme dilution rates. Dilution control equipment-Consumers can choose from several options that are custom designed for maximum efficiency, consistency, durability and portability.



# DEGREASERS



## QUANTUM ALPHA HD DEGREASER #8750

- Formulated to work quickly and emulsify oily soils completely
- Super-concentration means savings in shipping, handling, storage and dilution
- Contains corrosion inhibitors to prevent flash rusting
- Special buffers allow cleaning power to be extended to all dilutions
- Color: Red
- Freeze Point: 25 °F
- pH (Concentrate): 13.0
- VOC: 5.0%
- Fast-acting, targets floors, walls, and equipment



## QUANTUM GAMMA SOLVENT DEGREASER #8725

- Penetrates, loosens and emulsifies the most difficult soils
- Super-concentration means savings in shipping, handling, storage and dilution
- Contains corrosion inhibitors to prevent flash rusting
- Special buffers allow cleaning power to be extended to all dilutions
- Color: Blue
- Odor: Butyl
- pH (Concentrate): 13.2
- VOC: 20.0%
- Cleaning ability with anti-soil redeposition qualities for cleaner, safer surfaces.



## QUANTUM DELTA UNIVERSAL DEGREASER #8760

- Formulated to powerfully emulsify greasy, oily soils
- Super-concentration means savings in shipping, handling, storage and dilution
- Non-corrosive formula for safe cleaning
- Special buffers allow cleaning power to be extended to all dilutions
- Color: Green
- Odor: Mild
- pH (Concentrate): 12.2
- VOC: 6.0%
- Non-corrosive and formulated to clean the most difficult soils.



## FUSION DG DEGREASER #1181

- Highly concentrated aqueous manual parts and general purpose cleaner.
- Effective on contaminants including road dirt, grease, oil, tar and more.
- Multi-metal safe and can be used on steel, cast iron, aluminum, copper and brass.
- Color: Clear, yellow liquid
- Odor: Mild, characteristic
- pH (Concentrate): 10.6
- No VOCs
- Multi-purpose degreaser with d-mark for outstanding rubber mark removal



# DISPENSERS

## CALIBER 4/1 GPM DISPENSER ZM255



- Industrial and institutional applications using central filling areas
- Ideal for filling mop buckets and walk-behind scrubbers
- Easily fill scrubbers, mop buckets and spray bottles using metering tips designed to meet various dilution ratios
- Compact design enables wide use and flexibility
- Accommodates 5, 20 and 55 gallon chemical containers
- Safely fills spray bottles at 1 GPM and buckets or scrubbers at 10 GPM
- Optional water meter allows chemical use verification



## DISPENSER STAND SS BASE ZM248

- Industrial and institutional applications using central filling areas where wall space is limited
- Where it is advantageous to easily fill scrubbers, mop buckets and spray bottles using metering tips designed to meet various dilution ratios
- Compact design enables wide use and flexibility
- Can be outfitted with either a Caliber, Eclipse or Express dispenser
- Accommodates 5, 20 and 55 gallon chemical containers
- Safely fills spray bottles at 1 GPM and buckets or scrubbers up to 10 GPM
- Optional water meter allows chemical use verification
- Requires minimal floor space for installations



## ECLIPSE 10/1 GPM DISPENSER ZM250

- Industrial plants using centralized filling locations
- Industrial or commercial customers with 8 GPM flow using wall mounted filling stations
- One single unit can fill spray bottles (at 1 GPM), mop buckets and scrubbers (at 10 GPM)
- Stainless steel construction for durability in extreme environments
- Compact size for easy wall mounting
- Full assortment of metering tips designed to automatically and accurately meet a wide range of dilution ratios (4:1 to 52:1 low flow and 14:1 to 341:1 high flow)
- Furnished with an 8 ft. discharge hose for high flow output

## WALK A BOUT HAND HELD MOBILE DISPENSER ZM260



- Portable, lightweight design enables wide use and flexibility
- Requires no wall space
- Lock on option for hands free filling
- Built in backflow protection
- Ergonomic squeeze handle eliminates hand fatigue
- Hanger grooves secure unit to bucket or tanks
- One dispenser can be used with a wide variety of cleaning products
- Safely fills spray bottles at 2.8 GPM
- Dilution ratios of 32:1 and 64:1



# MICROFIBER



- The newer, more effective and ergonomic way of mopping floors.
- Separate clean and rinse buckets on trolley for superior performance
- The buckets are easy to fill and clean due to independent plastic buckets with handles
- Choice between down press or side press wringer to match mop style and personal preference
- 50% more capacity than standard mop bucket, reducing the trips to mop sink
- Reversible metal handle and heavy duty caster wheels allow for seamless transporting over uneven surfaces and thresholds



**DOUBLE MOP BUCKET W/PRESS  
NFTROLLEY1**



**JAW STYLE MOP HANDLE  
NFJH40YLEA**



**BLUE LARGE MICROFIBER TUBE MOP  
NFSMBLEA**



**ORANGE XL MICROFIBER TUBE MOP  
NFSMOREA**





### GLOSS BLACK PAINT S11-3

- Gloss black paint is made for many applications, can be used for cover ups on wheel wells or for overall coverage of most surfaces.
- It is a fast drying paint, can be used for many applications.



### SEMI-GLOSS BLACK HT1824

- Semi-Gloss black is a fast drying engine paint that helps restore engines to there original color.
- Can be used on many other types of applications.



### FLAT BLACK ENAMEL HT1810

- Flat Black enamel is a fast drying engine paint that helps restore engines to there original color.
- Can be used on many other types of applications.



### GLOSS BLACK ENAMEL HT1803

- Gloss black enamel is a fast drying engine paint that helps restore engines to there original color.
- Can be used on many other types of applications.



### BLACK ENGINE PAINT G2-P

- Black engine paint is corrosion-resistant, solvent-based black engine paint which restores the engines and wheel wells to a “like new” appearance.



### VESCO RUBBERIZED SPRAY UNDERCOAT V8051

- Vesco Rubberized Spray Undercoat can be used for many types of applications.
- It will protect against corrosion while rust-proofing most metal surfaces.
- It dries quickly and can be painted over.
- Also deadens most sounds.



# WIZARD



## WIZARD MIST & SHINE 01214

**22 oz.**

- Wizard Mist & Shine is a detailer's best friend
- It's safe on fresh paint, brightens paint and hides swirls.
- It contains no wax solvents, silicone, and will not streak, scratch or smear.
- Quicker than hand glazing or hand polishing when protection is not needed for long term.



## WIZARD WIPE DOWN 01220

**22 oz.**

- Wizard Wipe Down is great for matte paint, safe for all paint finishes.
- Contains no wax, solvents or silicones.
- Removes dust, fingerprints, road grime and oily residue without adding gloss.
- Removes streaks and smears from over use of waxes, glazes, etc.



## WIZARD METAL POLISH 11011

**3 oz.**

- Wizard Metal Polish is the magic in the cloth.
- Fast cutting, brightens & protects all metals (brass-copper-nickel-chrome-aluminum).
- It also removes tarnish, corrosion, brake dust, oxidation, and tar.
- Safe for coated wheels and motorcycles.



## WIZARD METAL RENEW 11020

**8 oz.**

- Wizard Metal Renew is a liquid polish for all metals.
- It is fast cutting, easy to apply and remove.
- Also brightens and renews aluminum, brass, stainless steel, chrome, fiberglass and more.
- Creamy emulsion does not require constant shaking.
- Use by hand or power wheel.



## WIZARD POWER SEAL 11021

**8 oz.**

- Wizard Power Seal will seal and protect all metals with a safe shield for all polished metals.
- Provides an acrylic barrier to stop air/moisture.
- Also super seals and protects from rust and corrosion.



## WIZARD SHINE MASTER 11033

**16 oz.**

- Wizard Shine Master is a polish and a breathable sealant.
- It goes on easy and come off easy, and leaves a awesome gloss.
- Leaves no streaks or smears, theres no silicone or wax.
- Safe for fresh paint, clear coat and Lexan.



## WIZARD FINISH CUT 11040

**32 oz.**

- Wizard Finish Cut is a no swirl type compound.
- Levels 1500 grit or less sand scratches.
- One step buffing on most colors and clear coat, fresh or aged finishes.
- No wax, silicone or crystalline silica, water-based, no staining, etching or dusting.



## WIZARD TURBO CUT 11044

**32 oz.**

- Wizard Turbo Cut is a fast cut on dead paint, gel-coat and fiberglass.
- Removes 1200 grit or less sand scratches.
- High gloss finishing on fresh or aged paint and clear coat.
- No wax, silicone or crystalline silica, water based, easy clean up without staining.



# 3M



## 3M FINESSE-IT COMPOUND 5928-Q

**32 oz.**

- 3M- Finesse-It Compound is a product designed for use on OEM fully cured automotive paints.
- It can remove grade 1500 sand scratches.
- Also will remove most swirl marks and compounds marks while leaving a glazed finish.



## 3M PERFECT-IT II COMPOUND 5973-Q

**32 oz.**

- 3M-Perfect-It II Compound is specially designed for medium cutting.
- Also for removing 1200,1500, and 2000 cut or sanding scratches in automotive paints including most clear coats.



## 3M PERFECT-IT POLISH GLAZE 5996-Q

**32 oz.**

- 3M-Perfect-It Polish Glaze is uniquely formulated to remove compound swirl marks.
- Contains no waxes or silicones.
- Best for dark colored paint finishes with little clean up required.
- Leaves a wheel mark free finish when applied with a foam pad.



## 3M MARINE COMPOUND 6025-G

- 3M-Marine Compound is a aggressive cut compound for gel-coat finishes.
- It will remove sanding scratches in most gel-coats.
- Fast cut formulation that reduces compounding time, contains no waxes or silicones.



## 3M PERFECT-IT MACHINE POLISH 6064-Q

**32 oz.**

- 3M-Perfect-It Machine Polish will quickly and effectively will remove most compound, swirl marks.
- It will leave an outstanding finish, also very easy to work with, and easy cleanup.



## 3M PERFECT-IT 3000 6068-Q

**32 oz.**

- 3M-Perfect-It 3000 produces a swirl free finish even on black vehicles.
- Quickly and effectively removes fine machine polish swirls.
- The unique formula will eliminate most swirl marks and produce a high gloss finish.



## 3M PERFECT-IT COMPOUND EXTRA CUTTING 6085-Q

**32 oz.**

3M-Perfect-It Compound Extra Cutting is a fast cutting compound designed to remove sand scratches and leaves a fine finish on most automotive paints. Great on most automotive finishes.



## 3M #7 SUPER ADHESIVE 21210

**24 oz.**

- 3M-#7 Super Adhesive is a multi-purpose spray adhesive that can be used on cardboard, carpet tiles, foam board, and insulation, metal, paper, plastic, wood and many more applications.



# AUTOMOTIVE & INDUSTRIAL SUPPLIER LINKS

BLUE SKY-DEF FLUIDS [BLUESKYDEFNA.COM](http://BLUESKYDEFNA.COM)

CAM 2 [CAM2.COM](http://CAM2.COM)

CAR BRITE [CARBRITE.COM](http://CARBRITE.COM)

CASTROL [CASTROL.COM](http://CASTROL.COM)

DUBIOS [DUBIOSCHEMICALS.COM](http://DUBIOSCHEMICALS.COM)

MOBIL [MOBILOIL.COM](http://MOBILOIL.COM)

NUANCE SOLUTIONS [NUANCESOLUTIONS.COM](http://NUANCESOLUTIONS.COM)

FORTECH [FORTECHPRODUCTS.COM](http://FORTECHPRODUCTS.COM)

LUBRIPLATE [LUBRIPLATE.COM](http://LUBRIPLATE.COM)

SUNOCO [SUNOCOLUBES.COM](http://SUNOCOLUBES.COM)

QUAKER [QADVANTAGE.COM](http://QADVANTAGE.COM)

VALVOLINE [VALVOLINE.COM](http://VALVOLINE.COM)

## VEHICLE APPLICATION

VALVOLINE FILTERS • WIPER BLADES [VALVOLINEFILTERS.COM](http://VALVOLINEFILTERS.COM)





VESCO OIL CORPORATION

## AUTOMOTIVE - MICHIGAN & NW OHIO

### BULK OIL PROGRAMS

Accurate  
GM AC Delco  
Infinity  
Kia  
Lexus  
Mercedes  
Mobil  
Motorcraft  
Nissan  
Porsche  
Saab  
Toyota

### ANCILLARY PRODUCTS

ATF-Gear Oil-Grease  
Brake Fluid  
Cleaners/Degreasers  
Floor Mats  
Hand Soap  
Janitorial Supplies  
Oil & Air Filters  
Paper Hand Towels  
Seat Covers  
Wiper Blades

### WASHER SOLVENT VISIBLE SOLUTIONS

Bulk/Drums/Cases  
Ice Breaker - Winter  
Bug Buster - Summer

### ANTI - FREEZE

Bulk/Drums/Cases  
Dex-Cool  
G-05  
MaxLife Universal  
Zerex

### ENVIRONMENTAL SERVICES

Parts Washer Program  
Consultation

### COLLECTION & DISPOSAL

Paint Booth Filters  
Used Anti-Freeze  
Used Filters  
Used Gasoline  
Used Oil  
Waste Paint Solvents

### SERVICE CHEMICALS

VPS Valvoline  
MOC®  
Service Writer Training  
Service Menu Building

### SPECIAL PROGRAMS

Quick Lube Design  
Quick Lube Training  
Equipment Installation  
Equipment Maintenance

### AUTO RECONDITIONING

### DETAIL PRODUCTS

Car Brite  
Motor City



East Side Sales  
800.527.5358



[www.vescooil.com](http://www.vescooil.com)



West Side Sales  
800.356.3560

### A FULL SERVICE DISTRIBUTOR

- Delivering Automotive, Industrial & Metal Working Products
- Bulk & Packaged Lubricants
- Reconditioning Products
- Service Chemical Products
- Environmental Services
  - Environmental Consultation
  - Parts Washers
  - Waste Product Collection & Disposal
- Equipment Installation
- Equipment Maintenance

### ISO 9001 - 14001 CERTIFIED COMPANY

- 4 Distribution Facilities in Michigan
  - Detroit
  - Grand Rapids
  - Mancelona
  - Zilwaukee
- 4 Distribution Facilities in Ohio
  - Columbus
  - Medina
  - Dayton
  - Wauseon
- 1 Distribution Facility in Pennsylvania
  - Pittsburgh







**VESCO OIL CORPORATION**  
[www.vescooil.com](http://www.vescooil.com)